

# Recombinant Rhesus C-X-C motif chemokine ligand 16 Protein, His&SUMO tagged

Cat. No. CXCL16-255R Lot. No. (See product label)

## SPECIFICATION

<b>Product Overview</b>	Recombinant Rhesus CXCL16 Protein (51-228aa) with N-His&SUMO tag was expressed in E. coli.
<b>Species</b>	Rhesus macaque
<b>Source</b>	E.coli
<b>ProteinLength</b>	51-228aa
<b>Description</b>	Enables chemokine activity. Involved in several processes, including positive regulation of cell growth; response to interferon-gamma; and response to tumor necrosis factor. Located in extracellular space. Biomarker of COVID-19 and systemic scleroderma.
<b>Tag</b>	N-His&SUMO
<b>Molecular Mass</b>	33.24 kDa
<b>AA Sequence</b>	MNWSHPQFEKSSGSSGGHHHHHHGGSGSGSDSEVNQEAKPEVKPEVKPETHIN LKVSDGSSEIFFKIKKTTPLRRLMEAFKRQGGKEMDSLRFYDGIQADQAPEDLDM EDNDIIEAHREQIGNEGTVTGSCHCSKRISSDSPPSAQFMNRLRKHLRAYHHCLHY IRFQLPSWSVCGGSKDPWVRELMSCLDLKECGHAYLGSAHQEHLPTSTPISQAS EGASSDIRTPTQMLLSILQSTQCPTPPAGSLSLDKELTRPSETTIPTAGHSLGVGLEA GENQKQLKNNAGPTAGTSATVP

 Tel: 1-631-559-9269 1-516-512-3133

 Email: [info@creative-biomart.com](mailto:info@creative-biomart.com)  Fax: 1-631-938-8127

 45-1 Ramsey Road, Shirley, NY 11967, USA

<b>Purity</b>	> 85% by SDS-PAGE
<b>Storage</b>	Store it under sterile conditions at -20 to -80 centigrade. It is recommended that the protein be aliquoted for optimal storage. Avoid repeated freeze-thaw cycles.
<b>Storage Buffer</b>	20 mM Tris-HCl, 0.10 M NaCl, pH8.0
<b>Concentration</b>	0.5 mg/mL

## GENE INFORMATION

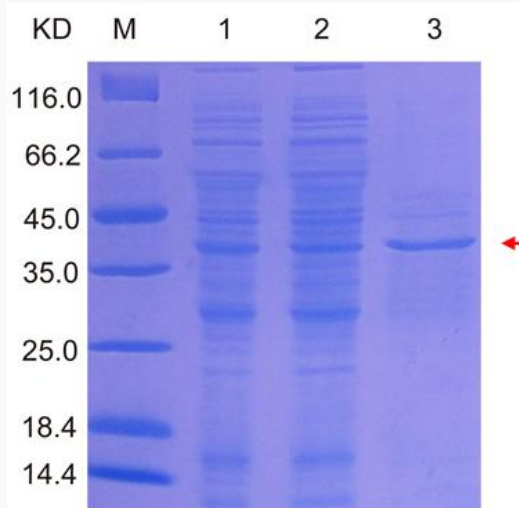
<b>Gene Name</b>	CXCL16 C-X-C motif chemokine ligand 16 [ <i>Macaca mulatta</i> (Rhesus monkey) ]
<b>Official Symbol</b>	CXCL16
<b>Synonyms</b>	CXCL16; C-X-C motif chemokine ligand 16; C-X-C motif chemokine 16
<b>Gene ID</b>	721566
<b>mRNA Refseq</b>	XM_001117747
<b>Protein Refseq</b>	XP_001117747
<b>UniProt ID</b>	F7AGQ0

 Tel: 1-631-559-9269 1-516-512-3133

 Email: [info@creative-biomart.com](mailto:info@creative-biomart.com)  Fax: 1-631-938-8127

 45-1 Ramsey Road, Shirley, NY 11967, USA

**SDS-PAGE of  
Rhesus CXCL16  
fusion protein  
purification**



Lane M: Protein Marker  
Lane 1: Un-purified  
Lane 2: Flow through  
Lane 3: Elution

 Tel: 1-631-559-9269 1-516-512-3133

 Email: [info@creative-biomart.com](mailto:info@creative-biomart.com)  Fax: 1-631-938-8127

 45-1 Ramsey Road, Shirley, NY 11967, USA