

Recombinant Human CXCL16 protein, His & T7-tagged

Cat. No. CXCL16-7648H Lot. No. (See product label)

SPECIFICATION

Product Overview	Recombinant Human CXCL16 aa. (Ser33~Thr171 (Accession # Q9H2A7)) fused with N-terminal His & T7 tag was produced in E. coli cells.
Species	Human
Source	E.coli
ProteinLength	Ser33~Thr171
Form	Freeze-dried powder
Molecular Mass	Predicted Molecular Mass: 19.2kDa
Endotoxin	<1.0EU per 1g (determined by the LAL method)
Purity	>95%
Characteristic	The isoelectric point is 9.
Applications	SDS-PAGE; WB; ELISA; IP.
Stability	The thermal stability is described by the loss rate. The loss rate was determined by accelerated thermal degradation test, that is, incubate the protein at 37°C for 48h, and no obvious degradation and precipitation were observed. The loss rate is less than 5% within the expiration date under appropriate storage condition.

 Tel: 1-631-559-9269 1-516-512-3133

 Email: info@creative-biomart.com  Fax: 1-631-938-8127

 45-1 Ramsey Road, Shirley, NY 11967, USA

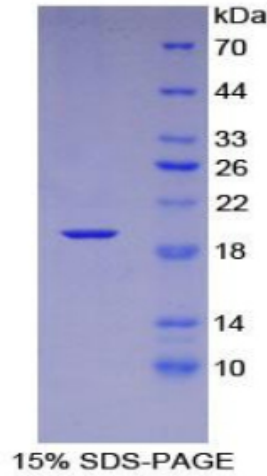
Storage	Avoid repeated freeze/thaw cycles. Store at 2-8°C for one month. Aliquot and store at -80°C for 12 months.
Storage buffer	Supplied as lyophilized form in PBS, pH7.4, containing 5% sucrose, 0.01% sarcosyl.
Reconstitution	Reconstitute in sterile PBS, pH7.2-pH7.4.
GENE INFORMATION	
Gene Name	CXCL16 C-X-C motif chemokine ligand 16 [Homo sapiens (human)]
Official Symbol	CXCL16
Synonyms	SRPSOX; CXCLG16; SR-PSOX; CXC chemokine ligand 16; chemokine (C-X-C motif) ligand 16; scavenger receptor for phosphatidylserine and oxidized low density lipoprotein; small-inducible cytokine B16; transmembrane chemokine CXCL16; C-X-C motif chemokine 16
Gene ID	58191
mRNA Refseq	NM_001100812.1
Protein Refseq	NP_001094282.1
UniProt ID	Q9H2A7

 Tel: 1-631-559-9269 1-516-512-3133

 Email: info@creative-biomart.com  Fax: 1-631-938-8127

 45-1 Ramsey Road, Shirley, NY 11967, USA

SDS-PAGE



 Tel: 1-631-559-9269 1-516-512-3133

 Email: info@creative-biomart.com  Fax: 1-631-938-8127

 45-1 Ramsey Road, Shirley, NY 11967, USA