

Recombinant Human CXCL17 Protein, His tagged

Cat. No. CXCL17-872H Lot. No. (See product label)

SPECIFICATION

Product Overview	Recombinant Human CXCL17 Protein with His tag was expressed in E. coli.
Species	Human
Source	E.coli
Description	The protein encoded by this gene is a mucosal chemokine that attracts immature dendritic cells and blood monocytes to the lungs. The encoded protein also promotes tumorigenesis through an angiogenic activity. Finally, this protein exhibits strong antimicrobial activity against E. coli, S. aureus, Salmonella, P. aeruginosa, and C. albicans. Two transcript variants, one protein-coding and the other non-protein coding, have been found for this gene.
Molecular Mass	The protein has a calculated MW of 14 kDa.
AA Sequence	MGSSHHHHHSSGLVPRGSHMSSLNPGVARGHRDRGQASRRWLQEGGQECECK DWFLRAPRRKFMTVSGLPKKQCPCDHFKGNVKKTRHQRHHRKPNKHSRACQQFL KQCQLRSFALPL
Endotoxin	< 1 EU/μg by LAL
Purity	> 90% by SDS-PAGE
Storage	Store it under sterile conditions at -20 to -80 centigrade. It is recommended that the protein be aliquoted for optimal storage. Avoid repeated freeze-thaw cycles.

 Tel: 1-631-559-9269 1-516-512-3133

 Email: info@creative-biomart.com  Fax: 1-631-938-8127

 45-1 Ramsey Road, Shirley, NY 11967, USA

Concentration 1 mg/mL by BCA

Storage Buffer Sterile PBS, pH 7.4

GENE INFORMATION

Gene Name CXCL17 chemokine (C-X-C motif) ligand 17 [Homo sapiens]

Official Symbol CXCL17

Synonyms CXCL17; chemokine (C-X-C motif) ligand 17; VEGF co-regulated chemokine 1; Dcip1; DMC; UNQ473; VCC1; C-X-C motif chemokine 17; dendritic cell and monocyte chemokine-like protein; VCC-1; MGC138300;

Gene ID 284340

mRNA Refseq NM_198477

Protein Refseq NP_940879

MIM 611387

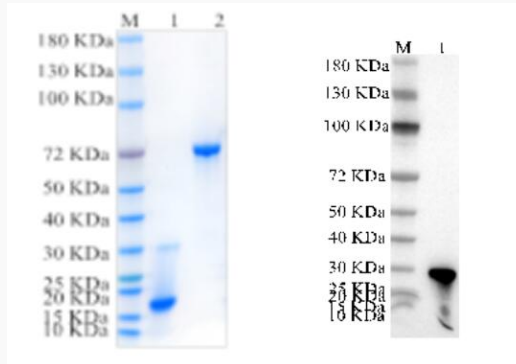
UniProt ID Q6UXB2

 Tel: 1-631-559-9269 1-516-512-3133

 Email: info@creative-biomart.com  Fax: 1-631-938-8127

 45-1 Ramsey Road, Shirley, NY 11967, USA

**Reducing 12% SDS-
PAGE (CBB stained)
and WB (Anti-His
Mouse Monoclonal
Antibody) analysis
profile of purified
CXCL17-872H**



1. CXCL17-872H
2. BSA

 Tel: 1-631-559-9269 1-516-512-3133

 Email: info@creative-biomart.com  Fax: 1-631-938-8127

 45-1 Ramsey Road, Shirley, NY 11967, USA