

## Active Recombinant Human CXCL2 Protein (Ala35-Asn107), N-His tagged, Animal-free, Carrier-free

Cat. No. CXCL2-135H Lot. No. (See product label)

### SPECIFICATION

<b>Product Overview</b>	Recombinant Human CXCL2 Protein (Ala35-Asn107) with N-His tag was expressed in E. coli and Animal-free as well as Carrier-free.
<b>Species</b>	Human
<b>Source</b>	E.coli
<b>ProteinLength</b>	Ala35-Asn107
<b>Description</b>	C-X-C motif chemokine 2 (CXCL2) also named Growth-regulated oncogene beta (GRO $\beta$ ), which is a chemokine of the intercrine alpha family. CXCL2 is a 8 kDa protein containing 73 amino acid residues. CXCL2 is expressed in immune cells such as macrophages and monocytes. CXCL2 plays an important role with immune responses and cancer progression. CXCL2 activates the cell signal transduction with casepas1 that affect the cell proliferation, differentiation and migration.
<b>Form</b>	Lyophilized
<b>Bio-activity</b>	Measure by its ability to chemoattract human PBMCs using a concentration range of 10.0 - 100.0 ng/mL. Note: Results may vary from different PBMC donors.
<b>Molecular Mass</b>	The protein has a calculated MW of 8.70 kDa. The protein migrates as 12 kDa under reducing condition (SDS-PAGE analysis).

 Tel: 1-631-559-9269 1-516-512-3133

 Email: [info@creative-biomart.com](mailto:info@creative-biomart.com)  Fax: 1-631-938-8127

 45-1 Ramsey Road, Shirley, NY 11967, USA

<b>Endotoxin</b>	< 0.1 EU/μg of the protein by the LAL method.
<b>Purity</b>	>98% as determined by SDS-PAGE analysis.
<b>Storage</b>	This product is stable after storage at: -20 centigrade for 12 months in lyophilized state from date of receipt. -20 or -80 centigrade for 1 month under sterile conditions after reconstitution. Avoid repeated freeze/thaw cycles.
<b>Storage Buffer</b>	Lyophilized from a 0.2 μm filtered solution of PBS, pH 7.4.
<b>Reconstitution</b>	It is recommended to reconstitute the lyophilized protein in sterile H <sub>2</sub> O to a concentration not less than 200 μg/mL and incubate the stock solution for at least 20 min to ensure sufficient re-dissolved.
<b>Shipping</b>	The product is shipped with polar packs. Upon receipt, store it immediately at -20 centigrade or lower for long term storage.

## GENE INFORMATION

<b>Gene Name</b>	CXCL2 chemokine (C-X-C motif) ligand 2 [ Homo sapiens (human) ]
<b>Official Symbol</b>	CXCL2
<b>Synonyms</b>	CXCL2; chemokine (C-X-C motif) ligand 2; GRO2, GRO2 oncogene; C-X-C motif chemokine 2; CINC 2a; GROb; MGSA b; MIP 2a; SCYB2; gro-beta; MGSA beta; MIP2-alpha; GRO2 oncogene; growth-regulated protein beta; macrophage inflammatory protein 2-alpha; melanoma growth stimulatory activity beta; GRO2; MIP2; MIP2A; MGSA-b; MIP-2a; CINC-2a;
<b>Gene ID</b>	2920

 Tel: 1-631-559-9269 1-516-512-3133

 Email: [info@creative-biomart.com](mailto:info@creative-biomart.com)  Fax: 1-631-938-8127

 45-1 Ramsey Road, Shirley, NY 11967, USA

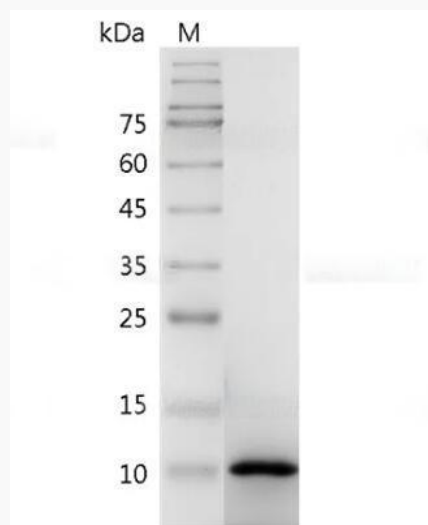
mRNA Refseq [NM\\_002089](#)

Protein Refseq [NP\\_002080](#)

MIM [139110](#)

UniProt ID [P19875](#)

**SDS-PAGE analysis  
of recombinant  
human CXCL2.**



 Tel: 1-631-559-9269 1-516-512-3133

 Email: [info@creative-biomart.com](mailto:info@creative-biomart.com)  Fax: 1-631-938-8127

 45-1 Ramsey Road, Shirley, NY 11967, USA