

# Recombinant Human CXCL2 Protein, Myc/DDK-tagged, C13 and N15-labeled

**Cat. No.** CXCL2-1930H    **Lot. No.** (See product label)

## SPECIFICATION

<b>Product Overview</b>	CXCL2 MS Standard C13 and N15-labeled recombinant protein (NP_002080) with a C-terminal MYC/DDK tag, was expressed in HEK293 cells.
<b>Species</b>	Human
<b>Source</b>	HEK293
<b>Description</b>	This antimicrobial gene is part of a chemokine superfamily that encodes secreted proteins involved in immunoregulatory and inflammatory processes. The superfamily is divided into four subfamilies based on the arrangement of the N-terminal cysteine residues of the mature peptide. This chemokine, a member of the CXC subfamily, is expressed at sites of inflammation and may suppress hematopoietic progenitor cell proliferation.
<b>Molecular Mass</b>	11.4 kDa
<b>AA Sequence</b>	MARATLSAAPSNPRLLRVALLLLLLVAASRRAAGAPLATELRCQCLQTLQGIHLKNIQ SVKVKSPGPHCAQTEVIATLKNGQKACLNPASPMVKKIIKMLKNGKSNTRTRPLEQ KLISEEDLAANDILDYKDDDDKV
<b>Purity</b>	> 80% as determined by SDS-PAGE and Coomassie blue staining
<b>Stability</b>	Stable for 3 months from receipt of products under proper storage and handling conditions.

 Tel: 1-631-559-9269    1-516-512-3133

 Email: [info@creative-biomart.com](mailto:info@creative-biomart.com)     Fax: 1-631-938-8127

 45-1 Ramsey Road, Shirley, NY 11967, USA

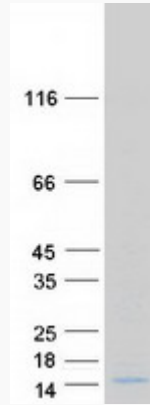
<b>Storage</b>	Store at -80 centigrade. Avoid repeated freeze-thaw cycles.
<b>Concentration</b>	50 µg/mL as determined by BCA
<b>Storage Buffer</b>	100 mM glycine, 25 mM Tris-HCl, pH 7.3.
<b>GENE INFORMATION</b>	
<b>Gene Name</b>	CXCL2 C-X-C motif chemokine ligand 2 [ Homo sapiens (human) ]
<b>Official Symbol</b>	CXCL2
<b>Synonyms</b>	CXCL2; chemokine (C-X-C motif) ligand 2; GRO2, GRO2 oncogene; C-X-C motif chemokine 2; CINC 2a; GROb; MGSA b; MIP 2a; SCYB2; gro-beta; MGSA beta; MIP2-alpha; GRO2 oncogene; growth-regulated protein beta; macrophage inflammatory protein 2-alpha; melanoma growth stimulatory activity beta; GRO2; MIP2; MIP2A; MGSA-b; MIP-2a; CINC-2a;
<b>Gene ID</b>	2920
<b>mRNA Refseq</b>	NM_002089
<b>Protein Refseq</b>	NP_002080
<b>MIM</b>	139110
<b>UniProt ID</b>	P19875

 Tel: 1-631-559-9269 1-516-512-3133

 Email: [info@creative-biomart.com](mailto:info@creative-biomart.com)  Fax: 1-631-938-8127

 45-1 Ramsey Road, Shirley, NY 11967, USA

**SDS-PAGE**



 Tel: 1-631-559-9269 1-516-512-3133

 Email: [info@creative-biomart.com](mailto:info@creative-biomart.com)  Fax: 1-631-938-8127

 45-1 Ramsey Road, Shirley, NY 11967, USA