

Recombinant Human CXCL2 Protein (Thr39-Asn107), C-His tagged

Cat. No. CXCL2-2100H Lot. No. (See product label)

SPECIFICATION

Product Overview	Recombinant human CXCL2 (Thr39-Asn107) fused with C-terminal His tag was expressed in E. coli.
Species	Human
Source	E.coli
ProteinLength	Thr39-Asn107
Form	Lyophilized powder/frozen liquid
Molecular Mass	7.59 kDa
Purity	>90% as determined by SDS-PAGE
Notes	For research use only.
Storage	Use a manual defrost freezer and avoid repeated freeze thaw cycles. Store at 2 to 8 centigrade for one week. Store at -20 to -80 centigrade for twelve months from the date of receipt.
Storage Buffer	Supplied as solution form in PBS or lyophilized from PBS.
Reconstitution	Reconstitute in sterile water for a stock solution.

 Tel: 1-631-559-9269 1-516-512-3133

 Email: info@creative-biomart.com  Fax: 1-631-938-8127

 45-1 Ramsey Road, Shirley, NY 11967, USA

Shipping They are shipped out with dry ice/blue ice unless customers require otherwise.

GENE INFORMATION

Gene Name CXCL2 chemokine (C-X-C motif) ligand 2 [Homo sapiens (human)]

Official Symbol CXCL2

Synonyms CXCL2; chemokine (C-X-C motif) ligand 2; GRO2, GRO2 oncogene; C-X-C motif chemokine 2; CINC 2a; GROb; MGSA b; MIP 2a; SCYB2; gro-beta; MGSA beta; MIP2-alpha; GRO2 oncogene; growth-regulated protein beta; macrophage inflammatory protein 2-alpha; melanoma growth stimulatory activity beta; GRO2; MIP2; MIP2A; MGSA-b; MIP-2a; CINC-2a;

Gene ID 2920

mRNA Refseq NM_002089

Protein Refseq NP_002080

MIM 139110

UniProt ID P19875

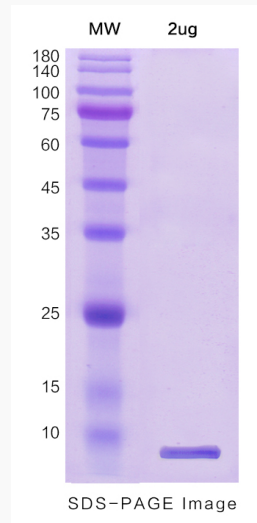
 Tel: 1-631-559-9269 1-516-512-3133

 Email: info@creative-biomart.com  Fax: 1-631-938-8127

 45-1 Ramsey Road, Shirley, NY 11967, USA



SDS-PAGE



Tel: 1-631-559-9269 1-516-512-3133

Email: info@creative-biomart.com Fax: 1-631-938-8127

45-1 Ramsey Road, Shirley, NY 11967, USA