

Recombinant Human CXCL2 Protein (Gly34-Asn107), N-His tagged

Cat. No. CXCL2-2101H Lot. No. (See product label)

SPECIFICATION

Product Overview	Recombinant human CXCL2/GRO-beta/MIP2-alpha (Gly34-Asn107) fused with N-His tag was expressed in E. coli.
Species	Human
Source	E.coli
ProteinLength	Gly34-Asn107
Form	Lyophilized powder/frozen liquid
Molecular Mass	10.25 kDa
Purity	>90% as determined by SDS-PAGE
Notes	For research use only.
Storage	Use a manual defrost freezer and avoid repeated freeze thaw cycles. Store at 2 to 8 centigrade for one week. Store at -20 to -80 centigrade for twelve months from the date of receipt.
Storage Buffer	0.01M PBS, pH 7.4, 0.02% NLS
Reconstitution	Reconstitute in sterile water for a stock solution.

 Tel: 1-631-559-9269 1-516-512-3133

 Email: info@creative-biomart.com  Fax: 1-631-938-8127

 45-1 Ramsey Road, Shirley, NY 11967, USA

Shipping

They are shipped out with dry ice/blue ice unless customers require otherwise.

GENE INFORMATION
Gene Name

CXCL2 chemokine (C-X-C motif) ligand 2 [Homo sapiens (human)]

Official Symbol

CXCL2

Synonyms

CXCL2; chemokine (C-X-C motif) ligand 2; GRO2, GRO2 oncogene; C-X-C motif chemokine 2; CINC 2a; GROb; MGSA b; MIP 2a; SCYB2; gro-beta; MGSA beta; MIP2-alpha; GRO2 oncogene; growth-regulated protein beta; macrophage inflammatory protein 2-alpha; melanoma growth stimulatory activity beta; GRO2; MIP2; MIP2A; MGSA-b; MIP-2a; CINC-2a;

Gene ID

2920

mRNA Refseq

NM_002089

Protein Refseq

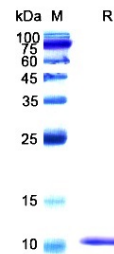
NP_002080

MIM

139110

UniProt ID

P19875

SDS-PAGE


Tel: 1-631-559-9269 1-516-512-3133

Email: info@creative-biomart.com Fax: 1-631-938-8127

45-1 Ramsey Road, Shirley, NY 11967, USA