

Recombinant Human CXCL2 Protein, His tagged

Cat. No. CXCL2-224H **Lot. No.** (See product label)

SPECIFICATION

Product Overview	Recombinant Human CXCL2 Protein (35-107 aa) with His tag was expressed in E.coli.
Species	Human
Source	E.coli
ProteinLength	35-107 aa
Description	This antimicrobial gene is part of a chemokine superfamily that encodes secreted proteins involved in immunoregulatory and inflammatory processes. The superfamily is divided into four subfamilies based on the arrangement of the N-terminal cysteine residues of the mature peptide. This chemokine, a member of the CXC subfamily, is expressed at sites of inflammation and may suppress hematopoietic progenitor cell proliferation.
Form	Sterile PBS, pH7.4, 10% Glycerol
Molecular Mass	10 kDa
AASequence	MGSSHHHHHHSSGLVPRGSHMAPLATELRCQCLQTLQGILKNIQSVKVKSPGPHCA QTVIATLKNQKACLNPASPMVKKIIEKMLKNGKSN
Endotoxin	< 1 EU/μg by LAL

 Tel: 1-631-559-9269 1-516-512-3133

 Email: info@creative-biomart.com  Fax: 1-631-938-8127

 45-1 Ramsey Road, Shirley, NY 11967, USA

Purity	>90% by SDS-PAGE
Storage	Store it under sterile conditions at -20 to -80 centigrade. It is recommended that the protein be aliquoted for optimal storage. Avoid repeated freeze-thaw cycles.
Concentration	0.8 mg/mL by BCA

GENE INFORMATION

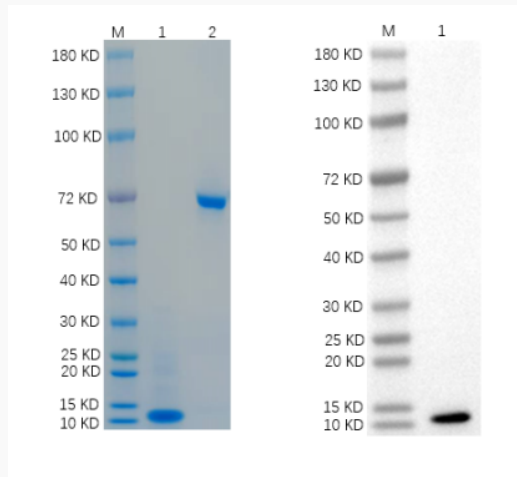
Gene Name	CXCL2 chemokine (C-X-C motif) ligand 2 [Homo sapiens (human)]
Official Symbol	CXCL2
Synonyms	CXCL2; chemokine (C-X-C motif) ligand 2; GRO2, GRO2 oncogene; C-X-C motif chemokine 2; CINC 2a; GROb; MGSA b; MIP 2a; SCYB2; gro-beta; MGSA beta; MIP2-alpha; GRO2 oncogene; growth-regulated protein beta; macrophage inflammatory protein 2-alpha; melanoma growth stimulatory activity beta; GRO2; MIP2; MIP2A; MGSA-b; MIP-2a; CINC-2a
Gene ID	2920
mRNA Refseq	NM_002089
Protein Refseq	NP_002080
MIM	139110
UniProt ID	P19875

 Tel: 1-631-559-9269 1-516-512-3133

 Email: info@creative-biomart.com  Fax: 1-631-938-8127

 45-1 Ramsey Road, Shirley, NY 11967, USA

SDS-PAGE and WB



1.CXCL2-224H 2.BSA Reducing 4%-20% SDS-PAGE (CBB stained) and WB (Anti-His Mouse Monoclonal antibody) analysis profiles of purified CXCL2-224H

 Tel: 1-631-559-9269 1-516-512-3133

 Email: info@creative-biomart.com  Fax: 1-631-938-8127

 45-1 Ramsey Road, Shirley, NY 11967, USA