

# Recombinant Human X-C motif chemokine ligand 2 Protein, Tag Free

**Cat. No.** CXCL2-246H    **Lot. No.** (See product label)

## SPECIFICATION

### Product Overview

Recombinant human CXCL2/GRO beta protein (P19875) (Ala 35-Asn 107) without tag was expressed in HEK293.

### Species

Human

### Source

HEK293

### ProteinLength

35-107aa

### Description

Chemokine (C-X-C motif) ligand 2 (CXCL2) is a small cytokine belonging to the CXC chemokine family that is also called macrophage inflammatory protein 2-alpha (MIP2-alpha), Growth-regulated protein beta (Gro-beta) and Gro oncogene-2 (Gro-2). CXCL2 is 90% identical in amino acid sequence as a related chemokine, CXCL1. This chemokine is secreted by monocytes and macrophages and is chemotactic for polymorphonuclear leukocytes and hematopoietic stem cells. The gene for CXCL2 is located on human chromosome 4 in a cluster of other CXC chemokines. CXCL2 mobilizes cells by interacting with a cell surface chemokine receptor called CXCR2. CXCL2, like related chemokines, is also a powerful neutrophil chemoattractant and is involved in many immune responses including wound healing, cancer metastasis, and angiogenesis. A study was published in 2013 testing the role of CXCL2, CXCL3, and CXCL1 in the migration of airway smooth muscle cells (ASMCs) migration which plays a significant role in asthma. The results of this study showed that CXCL2 and CXCL3 both help with the mediation of normal and asthmatic ASMC migration

 Tel: 1-631-559-9269    1-516-512-3133

 Email: [info@creative-biomart.com](mailto:info@creative-biomart.com)     Fax: 1-631-938-8127

 45-1 Ramsey Road, Shirley, NY 11967, USA

	through different mechanisms.
<b>Tag</b>	Non
<b>Molecular Mass</b>	8.2 kDa
<b>Endotoxin</b>	Less than 1.0 EU/μg by the LAL method.
<b>Purity</b>	>95% as determined by SDS-PAGE.
<b>Storage</b>	Please avoid repeated freeze-thaw cycles. Samples are stable for up to twelve months from date of receipt at -20 to -80 centigrade. It is recommended that aliquot the reconstituted solution to minimize freeze-thaw cycles.
<b>Storage Buffer</b>	Lyophilized from a 0.2 μm filtered solution of PBS, pH7.4, 5% Trehalose, 5% mannitol.
<b>Reconstitution</b>	Reconstitute at 250 μg/mL in sterile water.

## GENE INFORMATION

<b>Gene Name</b>	CXCL2 C-X-C motif chemokine ligand 2 [ Homo sapiens (human) ]
<b>Official Symbol</b>	CXCL2
<b>Synonyms</b>	CXCL2; chemokine (C-X-C motif) ligand 2; GRO2, GRO2 oncogene; C-X-C motif chemokine 2; CINC 2a; GROb; MGSA b; MIP 2a; SCYB2; gro-beta; MGSA beta; MIP2-alpha; GRO2 oncogene; growth-regulated protein beta; macrophage inflammatory protein 2-alpha; melanoma growth stimulatory activity beta; GRO2; MIP2; MIP2A; MGSA-b; MIP-2a; CINC-2a;

 Tel: 1-631-559-9269 1-516-512-3133

 Email: [info@creative-biomart.com](mailto:info@creative-biomart.com)  Fax: 1-631-938-8127

 45-1 Ramsey Road, Shirley, NY 11967, USA

**Gene ID** 2920

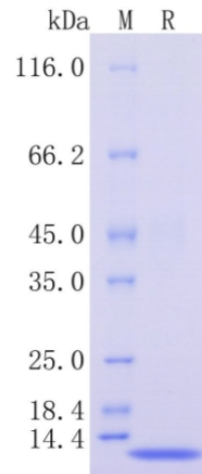
**mRNA Refseq** NM\_002089

**Protein Refseq** NP\_002080

**MIM** 139110

**UniProt ID** P19875

**Protein on SDS-PAGE under reducing (R) condition.**



 Tel: 1-631-559-9269 1-516-512-3133

 Email: [info@creative-biomart.com](mailto:info@creative-biomart.com)  Fax: 1-631-938-8127

 45-1 Ramsey Road, Shirley, NY 11967, USA