

Recombinant Human CXCL2 protein, rFc-tagged

Cat. No. CXCL2-3781H Lot. No. (See product label)

SPECIFICATION

Product Overview	Recombinant Human CXCL2 protein(P19875)(Ala35-Asn107), fused with N-terminal rFc tag, was expressed in HEK293.
Species	Human
Source	HEK293
Form	Lyophilized from 0.22 µm filtered solution in PBS, pH 7.4. Normally 5% trehalose and 5% mannitol are added as protectants before lyophilization.
Molecular Mass	35.1 kDa
Endotoxin	<0.1 EU/µg protein, LAL method
Purity	>90 %, SDS-PAGE >90 %, SEC-HPLC
Storage	It is recommended that the protein be aliquoted for optimal storage. Avoid repeated freeze-thaw cycles. Until expiry date, -20°C to -80°C as lyophilized proteins. 3 months, -20°C to -80°C under sterile conditions after reconstitution.
Reconstitution	Briefly centrifuge the tube before opening. Reconstitute at 0.1-0.5 mg/mL in sterile water.

GENE INFORMATION

 Tel: 1-631-559-9269 1-516-512-3133

 Email: info@creative-biomart.com  Fax: 1-631-938-8127

 45-1 Ramsey Road, Shirley, NY 11967, USA

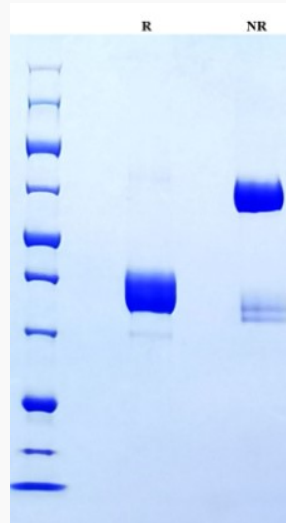
Gene Name	CXCL2 chemokine (C-X-C motif) ligand 2 [Homo sapiens]
Official Symbol	CXCL2
Synonyms	CXCL2; chemokine (C-X-C motif) ligand 2; GRO2, GRO2 oncogene; C-X-C motif chemokine 2; CINC 2a; GROb; MGSA b; MIP 2a; SCYB2; gro-beta; MGSA beta; MIP2-alpha; GRO2 oncogene; growth-regulated protein beta; macrophage inflammatory protein 2-alpha; melanoma growth stimulatory activity beta; GRO2; MIP2; MIP2A; MGSA-b; MIP-2a; CINC-2a;
Gene ID	2920
mRNA Refseq	NM_002089
Protein Refseq	NP_002080
MIM	139110
UniProt ID	P19875

 Tel: 1-631-559-9269 1-516-512-3133

 Email: info@creative-biomart.com  Fax: 1-631-938-8127

 45-1 Ramsey Road, Shirley, NY 11967, USA

SDS-PAGE



 Tel: 1-631-559-9269 1-516-512-3133

 Email: info@creative-biomart.com  Fax: 1-631-938-8127

 45-1 Ramsey Road, Shirley, NY 11967, USA