

Recombinant Human CXCL3 Protein, MBP-tagged

Cat. No. CXCL3-001H **Lot. No.** (See product label)

SPECIFICATION

Product Overview	Recombinant Human CXCL3 Protein 35-107 aa (full-length) with a MBP tag was expressed in E.coli.
Species	Human
Source	E.coli
ProteinLength	35-107 a.a.
Description	This antimicrobial gene encodes a member of the CXC subfamily of chemokines. The encoded protein is a secreted growth factor that signals through the G-protein coupled receptor, CXC receptor 2. This protein plays a role in inflammation and as a chemoattractant for neutrophils.
Molecular Mass	52.6 kDa
Purity	>95% confirmed by 10% SDS-PAGE stained with Coomassie Blue (CB), immunoblotting with anti-MBP (WB).
Applications	ELISA, WB, Antibody Production, Protein array
Quality Control Test	10% SDS-PAGE stained with Coomassie Blue (CB), immunoblotting with anti-MBP (WB) and peptide fingerprinting by MALDI-TOF mass spectrometry.
Storage	Store working aliquots at 4 centigrade for up to one week.

 Tel: 1-631-559-9269 1-516-512-3133

 Email: info@creative-biomart.com  Fax: 1-631-938-8127

 45-1 Ramsey Road, Shirley, NY 11967, USA

For extended storage, conserve at -80 centigrade.

Expiry	12 months from the date of purchase, if it is properly stored.
Storage Buffer	Phosphate-Buffered Saline (PBS), pH 7.4. No preservatives added.
Shipping	Dry Ice

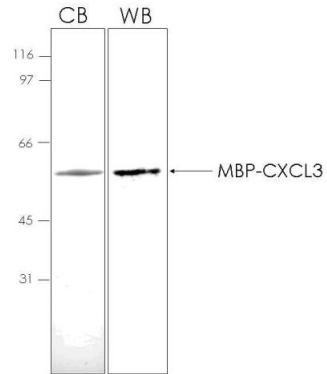
GENE INFORMATION

Gene Name	CXCL3 C-X-C motif chemokine ligand 3 [Homo sapiens (human)]
Official Symbol	CXCL3
Synonyms	CXCL3; C-X-C motif chemokine ligand 3; GRO3; GROg; MIP2B; SCYB3; MIP-2b; CINC-2b; C-X-C motif chemokine 3; GRO-gamma; GRO-gamma(1-73); GRO3 oncogene; MGSA gamma; MIP2-beta; chemokine (C-X-C motif) ligand 3; growth-regulated protein gamma; macrophage inflammatory protein 2-beta; melanoma growth stimulatory activity gamma
Gene ID	2921
mRNA Refseq	NM_002090
Protein Refseq	NP_002081
MIM	139111
UniProt ID	P19876

 Tel: 1-631-559-9269 1-516-512-3133

 Email: info@creative-biomart.com  Fax: 1-631-938-8127

 45-1 Ramsey Road, Shirley, NY 11967, USA



 Tel: 1-631-559-9269 1-516-512-3133

 Email: info@creative-biomart.com  Fax: 1-631-938-8127

 45-1 Ramsey Road, Shirley, NY 11967, USA