

## Active Recombinant Human CXCL3 Protein (Ala35-Asn107), N-His tagged, Animal-free, Carrier-free

Cat. No. CXCL3-136H Lot. No. (See product label)

### SPECIFICATION

<b>Product Overview</b>	Recombinant Human CXCL3 Protein (Ala35-Asn107) with N-His tag was expressed in E. coli and Animal-free as well as Carrier-free.
<b>Species</b>	Human
<b>Source</b>	E.coli
<b>ProteinLength</b>	Ala35-Asn107
<b>Description</b>	C-X-C motif chemokine 3 (CXCL3) also named Growth-regulated oncogene gamma (GROγ), which is a chemokine of the intercrine alpha family. CXCL3 is a 8kDa protein containing 73 amino acid residues. During inflammation, CXCL3 is activated by the TNF and IL-1 which mediates the monocytes migration and adhesion by targeting the CXCR2. CXCL3 activates the JNK activity which induce the cell differentiation.
<b>Form</b>	Lyophilized
<b>Bio-activity</b>	Measure by its ability to chemoattract BaF3 cells transfected with human CXCR2. The ED50 for this effect is < 2 ng/mL
<b>Molecular Mass</b>	The protein has a calculated MW of 8.67 kDa. The protein migrates as 11 kDa under reducing condition (SDS-PAGE analysis).
<b>Endotoxin</b>	< 0.1 EU/μg of the protein by the LAL method.

 Tel: 1-631-559-9269 1-516-512-3133

 Email: [info@creative-biomart.com](mailto:info@creative-biomart.com)  Fax: 1-631-938-8127

 45-1 Ramsey Road, Shirley, NY 11967, USA

<b>Purity</b>	>98% as determined by SDS-PAGE analysis.
<b>Storage</b>	This product is stable after storage at: -20 centigrade for 12 months in lyophilized state from date of receipt. -20 or -80 centigrade for 1 month under sterile conditions after reconstitution. Avoid repeated freeze/thaw cycles.
<b>Storage Buffer</b>	Lyophilized from a 0.2 µm filtered solution of PBS, pH 7.4.
<b>Reconstitution</b>	It is recommended to reconstitute the lyophilized protein in sterile H2O to a concentration not less than 200 µg/mL and incubate the stock solution for at least 20 min to ensure sufficient re-dissolved.
<b>Shipping</b>	The product is shipped with polar packs. Upon receipt, store it immediately at -20 centigrade or lower for long term storage.

## GENE INFORMATION

<b>Gene Name</b>	CXCL3 chemokine (C-X-C motif) ligand 3 [ Homo sapiens (human) ]
<b>Official Symbol</b>	CXCL3
<b>Synonyms</b>	CXCL3; chemokine (C-X-C motif) ligand 3; GRO3, GRO3 oncogene; C-X-C motif chemokine 3; CINC 2b; GROg; MIP 2b; SCYB3; GRO-gamma; MIP2-beta; MGSA gamma; GRO3 oncogene; GRO-gamma(1-73); growth-regulated protein gamma; macrophage inflammatory protein 2-beta; melanoma growth stimulatory activity gamma; GRO3; MIP2B; MIP-2b; CINC-2b;
<b>Gene ID</b>	2921
<b>mRNA Refseq</b>	NM_002090

 Tel: 1-631-559-9269 1-516-512-3133

 Email: [info@creative-biomart.com](mailto:info@creative-biomart.com)  Fax: 1-631-938-8127

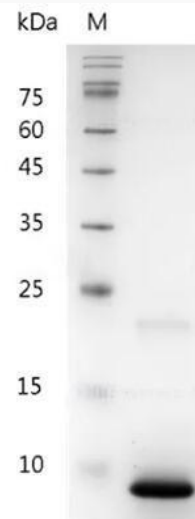
 45-1 Ramsey Road, Shirley, NY 11967, USA

**Protein Refseq** NP\_002081

**MIM** 139111

**UniProt ID** P19876

**SDS-PAGE analysis  
of recombinant  
human CXCL3.**



 Tel: 1-631-559-9269 1-516-512-3133

 Email: [info@creative-biomart.com](mailto:info@creative-biomart.com)  Fax: 1-631-938-8127

 45-1 Ramsey Road, Shirley, NY 11967, USA