

Recombinant Human CXCL3 protein

Cat. No. CXCL3-16H **Lot. No.** (See product label)

SPECIFICATION

Product Overview	Recombinant Human CXCL3 protein was expressed in Escherichia coli.
Species	Human
Source	E.coli
ProteinLength	73
Description	<p>CXCL3, also named GRO-γ, is belonging to the CXC chemokine family and encoded by the gene CXCL3. CXCL3/GRO-γ shares 86 % amino acid sequence with CXCL1/GRO-α. All three human GROs (GRO-α, GRO-β, GRO-γ) are members of the intercrine alpha (chemokine C-X-C) subfamily of chemokines. This chemokine is secreted by monocytes and macrophages. The functional receptor for CXCL3 has been identified as CXCR2. Similar to other GRO proteins, CXCL3 is potent neutrophil attractants and activators. CXCL3 plays a role in inflammation and exert its effects on endothelial cells in an autocrine fashion. All three GROs can bind with high affinity to the IL-8 receptor type B.</p>
Form	Lyophilized from a 0.2 μ m filtered concentrated solution in 20 mM PB, pH 7.4, 50 mM NaCl.
Bio-activity	Fully biologically active when compared to standard. The biological activity determined by a chemotaxis bioassay using human CXCR2 transfected human 293 cells is in a concentration range of 10-100 ng/ml.

 Tel: 1-631-559-9269 1-516-512-3133

 Email: info@creative-biomart.com  Fax: 1-631-938-8127

 45-1 Ramsey Road, Shirley, NY 11967, USA

Molecular Mass	Approximately 7.9 kDa, a single non-glycosylated polypeptide chain containing 73 amino acids.
AA Sequence	ASVVTELRCQCLQTLQGIHLKNIQSVNVRSPGPHCAQTEVIATLKNKGKACLNPASP MVQKIIEKILNKGSTN
Endotoxin	Less than 1 EU/g of rHuGRO- γ /CXCL3 as determined by LAL method.
Purity	>97% by SDS-PAGE and HPLC analysis.
Storage	Use a manual defrost freezer and avoid repeated freeze-thaw cycles. 12 months from date of receipt, -20 to -70 centigrade as supplied. 1 month, 2 to 8 centigrade under sterile conditions after reconstitution. 3 months, -20 to -70 centigrade under sterile conditions after reconstitution.
Reconstitution	We recommend that this vial be briefly centrifuged prior to opening to bring the contents to the bottom. Reconstitute in sterile distilled water or aqueous buffer containing 0.1 % BSA to a concentration of 0.1-1.0 mg/mL. Stock solutions should be apportioned into working aliquots and stored at \leq -20 centigrade. Further dilutions should be made in appropriate buffered solutions.

GENE INFORMATION

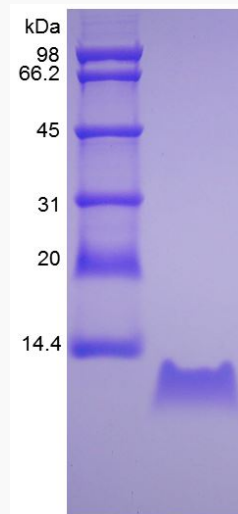
Gene Name	CXCL3
Official Symbol	CXCL3
Synonyms	CXCL3; chemokine (C-X-C motif) ligand 3; GRO3, GRO3 oncogene; C-X-C motif chemokine 3; CINC 2b; GRO γ ; MIP 2b; SCYB3; GRO-gamma; MIP2-beta; MGSA gamma; GRO3 oncogene; GRO-gamma(1-73); growth-regulated protein gamma; macrophage inflammatory protein 2-beta; melanoma growth stimulatory activity

 Tel: 1-631-559-9269 1-516-512-3133

 Email: info@creative-biomart.com  Fax: 1-631-938-8127

 45-1 Ramsey Road, Shirley, NY 11967, USA

gamma; GRO3; MIP2B; MIP-2b; CINC-2b;

Gene ID 2921**mRNA Refseq** NM_002090**Protein Refseq** NP_002081**MIM** 139111**UniProt ID** P19876**SDS-PAGE of
CXCL3-16H** Tel: 1-631-559-9269 1-516-512-3133 Email: info@creative-biomart.com  Fax: 1-631-938-8127 45-1 Ramsey Road, Shirley, NY 11967, USA