

Recombinant Human CXCL3 Protein (Ala35-Asn107), C-His tagged

Cat. No. CXCL3-2102H Lot. No. (See product label)

SPECIFICATION

Product Overview	Recombinant human CXCL3 (Ala35-Asn107) fused with C-terminal His tag was expressed in E. coli.
Species	Human
Source	E.coli
ProteinLength	Ala35-Asn107
Form	Lyophilized powder/frozen liquid
Molecular Mass	8.03 kDa
Purity	>90% as determined by SDS-PAGE
Notes	For research use only.
Storage	Use a manual defrost freezer and avoid repeated freeze thaw cycles. Store at 2 to 8 centigrade for one week. Store at -20 to -80 centigrade for twelve months from the date of receipt.
Storage Buffer	Supplied as solution form in PBS or lyophilized from PBS.
Reconstitution	Reconstitute in sterile water for a stock solution.

 Tel: 1-631-559-9269 1-516-512-3133

 Email: info@creative-biomart.com  Fax: 1-631-938-8127

 45-1 Ramsey Road, Shirley, NY 11967, USA

Shipping They are shipped out with dry ice/blue ice unless customers require otherwise.

GENE INFORMATION

Gene Name CXCL3 chemokine (C-X-C motif) ligand 3 [Homo sapiens (human)]

Official Symbol CXCL3

Synonyms CXCL3; chemokine (C-X-C motif) ligand 3; GRO3, GRO3 oncogene; C-X-C motif chemokine 3; CINC 2b; GROg; MIP 2b; SCYB3; GRO-gamma; MIP2-beta; MGSA gamma; GRO3 oncogene; GRO-gamma (1-73); growth-regulated protein gamma; macrophage inflammatory protein 2-beta; melanoma growth stimulatory activity gamma; GRO3; MIP2B; MIP-2b; CINC-2b;

Gene ID 2921

mRNA Refseq NM_002090

Protein Refseq NP_002081

MIM 139111

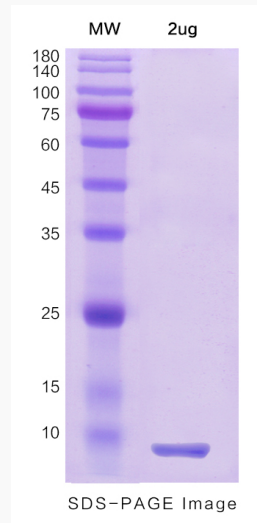
UniProt ID P19876

 Tel: 1-631-559-9269 1-516-512-3133

 Email: info@creative-biomart.com  Fax: 1-631-938-8127

 45-1 Ramsey Road, Shirley, NY 11967, USA

SDS-PAGE



 Tel: 1-631-559-9269 1-516-512-3133

 Email: info@creative-biomart.com  Fax: 1-631-938-8127

 45-1 Ramsey Road, Shirley, NY 11967, USA