

Recombinant Human CXCL5 protein

Cat. No. CXCL5-8540H Lot. No. (See product label)

SPECIFICATION

Product Overview	Recombinant Human CXCL5 protein(P42830) (Arg45-Asn114) was expressed in E. coli, with a N-terminal Met.
Species	Human
Source	E. coli
ProteinLength	45-114 aa
Form	Lyophilized from sterile 80% acetonitrile, 0.1% TFA, 20% H2O.
Molecular Mass	The recombinant human CXCL5 consists of 71 amino acids and predicts a molecular mass of 7.8 KDa. It migrates as an approximately 8 KDa band in SDS-PAGE under reducing conditions.
Purity	> 95 % as determined by SDS-PAGE
Storage	Store it under sterile conditions at -20°C to -80°C upon receiving. Recommend to aliquot the protein into smaller quantities for optimal storage. Avoid repeated freeze-thaw cycles.
Reconstitution	It is recommended that sterile water be added to the vial to prepare a stock solution of 0.2 ug/ul. Centrifuge the vial at 4°C before opening to recover the entire contents.
protein Refseq-	http://www.ncbi.nlm.nih.gov/protein/NP_002985.1

 Tel: 1-631-559-9269 1-516-512-3133

 Email: info@creative-biomart.com  Fax: 1-631-938-8127

 45-1 Ramsey Road, Shirley, NY 11967, USA

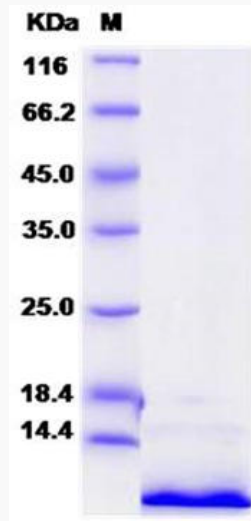
Weblink	
Unit ID	P42830
Unit ID-Weblink	http://www.uniprot.org/uniprot/P42830
GENE INFORMATION	
Gene Name	CXCL5 chemokine (C-X-C motif) ligand 5 [Homo sapiens]
Official Symbol	CXCL5
Synonyms	CXCL5; chemokine (C-X-C motif) ligand 5; SCYB5, small inducible cytokine subfamily B (Cys X Cys), member 5 (epithelial derived neutrophil activating peptide 78); C-X-C motif chemokine 5; ENA 78; ENA-78(1-78); small inducible cytokine B5; small-inducible cytokine B5; neutrophil-activating protein 78; neutrophil-activating peptide ENA-78; epithelial-derived neutrophil activating protein 78; epithelial-derived neutrophil-activating peptide 78; epithelial-derived neutrophil-activating protein 78; small inducible cytokine subfamily B (Cys-X-Cys), member 5 (epithelial-derived neutrophil-activating peptide 78); SCYB5; ENA-78;
Gene ID	6374
mRNA Refseq	NM_002994
protein Refseq	NP_002985
MIM	600324

 Tel: 1-631-559-9269 1-516-512-3133

 Email: info@creative-biomart.com  Fax: 1-631-938-8127

 45-1 Ramsey Road, Shirley, NY 11967, USA

SDS-PAGE



 Tel: 1-631-559-9269 1-516-512-3133

 Email: info@creative-biomart.com  Fax: 1-631-938-8127

 45-1 Ramsey Road, Shirley, NY 11967, USA