

Recombinant Human CXCL6 Protein (Val40-Asn114), N-GST tagged

Cat. No. CXCL6-2192H Lot. No. (See product label)

SPECIFICATION

| | |
|-------------------------|---|
| Product Overview | Recombinant human CXCL6/GCP-2 (Val40-Asn114) fused with N-GST tag was expressed in E. coli. |
| Species | Human |
| Source | E.coli |
| ProteinLength | Val40-Asn114 |
| Form | Lyophilized powder/frozen liquid |
| Molecular Mass | 34.99 kDa |
| Purity | >90% as determined by SDS-PAGE |
| Notes | For research use only. |
| Storage | Use a manual defrost freezer and avoid repeated freeze thaw cycles. Store at 2 to 8 centigrade for one week. Store at -20 to -80 centigrade for twelve months from the date of receipt. |
| Storage Buffer | 0.01M PBS, pH 7.4, 0.02% NLS |
| Reconstitution | Reconstitute in sterile water for a stock solution. |

 Tel: 1-631-559-9269 1-516-512-3133

 Email: info@creative-biomart.com  Fax: 1-631-938-8127

 45-1 Ramsey Road, Shirley, NY 11967, USA

Shipping They are shipped out with dry ice/blue ice unless customers require otherwise.

GENE INFORMATION

| | |
|------------------------|--|
| Gene Name | CXCL6 chemokine (C-X-C motif) ligand 6 (granulocyte chemotactic protein 2) [Homo sapiens (human)] |
| Official Symbol | CXCL6 |
| Synonyms | CXCL6; chemokine (C-X-C motif) ligand 6 (granulocyte chemotactic protein 2); SCYB6, small inducible cytokine subfamily B (Cys X Cys), member 6 (granulocyte chemotactic protein 2); C-X-C motif chemokine 6; CKA 3; GCP 2; chemokine alpha 3; small-inducible cytokine B6; granulocyte chemotactic protein 2; Small inducible cytokine subfamily B (Cys-X-Cys), member b; small inducible cytokine subfamily B (Cys-X-Cys), member 6 (granulocyte chemotactic protein 2); GCP2; CKA-3; GCP-2; SCYB6; |
| Gene ID | 6372 |
| mRNA Refseq | NM_002993 |
| Protein Refseq | NP_002984 |
| MIM | 138965 |
| UniProt ID | P80162 |

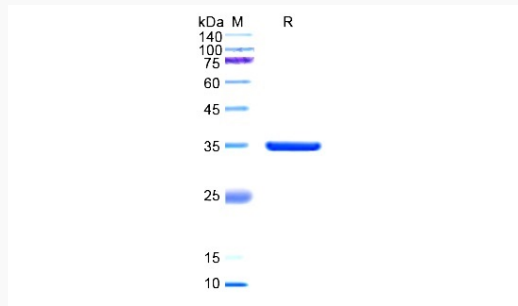
 Tel: 1-631-559-9269 1-516-512-3133

 Email: info@creative-biomart.com  Fax: 1-631-938-8127

 45-1 Ramsey Road, Shirley, NY 11967, USA



SDS-PAGE



Tel: 1-631-559-9269 1-516-512-3133

Email: info@creative-biomart.com Fax: 1-631-938-8127

45-1 Ramsey Road, Shirley, NY 11967, USA