

Recombinant Human CXCL6 protein, rFc-tagged

Cat. No. CXCL6-3784H Lot. No. (See product label)

SPECIFICATION

Product Overview	Recombinant Human CXCL6 protein(P80162)(Gly38-Asn114), fused with N-terminal rFc tag, was expressed in HEK293.
Species	Human
Source	HEK293
Form	Lyophilized from 0.22 µm filtered solution in PBS, pH 7.4. Normally 5% trehalose and 5% mannitol are added as protectants before lyophilization.
Molecular Mass	35.5 kDa
Endotoxin	<0.1 EU/µg protein, LAL method
Purity	>90 %, SDS-PAGE
Storage	It is recommended that the protein be aliquoted for optimal storage. Avoid repeated freeze-thaw cycles. Until expiry date, -20°C to -80°C as lyophilized proteins. 3 months, -20°C to -80°C under sterile conditions after reconstitution.
Reconstitution	Briefly centrifuge the tube before opening. Reconstitute at 0.1-0.5 mg/mL in sterile water.

GENE INFORMATION

 Tel: 1-631-559-9269 1-516-512-3133

 Email: info@creative-biomart.com  Fax: 1-631-938-8127

 45-1 Ramsey Road, Shirley, NY 11967, USA

Gene Name	CXCL6 chemokine (C-X-C motif) ligand 6 (granulocyte chemotactic protein 2) [Homo sapiens]
Official Symbol	CXCL6
Synonyms	CXCL6; chemokine (C-X-C motif) ligand 6 (granulocyte chemotactic protein 2); SCYB6, small inducible cytokine subfamily B (Cys X Cys), member 6 (granulocyte chemotactic protein 2); C-X-C motif chemokine 6; CKA 3; GCP 2; chemokine alpha 3; small-inducible cytokine B6; granulocyte chemotactic protein 2; Small inducible cytokine subfamily B (Cys-X-Cys), member b; small inducible cytokine subfamily B (Cys-X-Cys), member 6 (granulocyte chemotactic protein 2); GCP2; CKA-3; GCP-2; SCYB6;
Gene ID	6372
mRNA Refseq	NM_002993
Protein Refseq	NP_002984
MIM	138965
UniProt ID	P80162

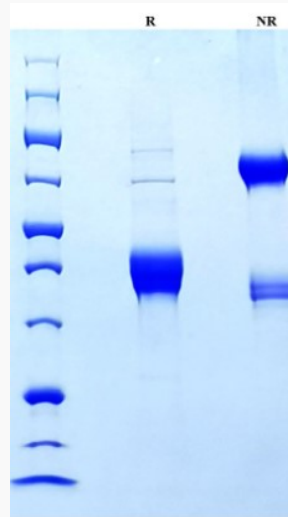
 Tel: 1-631-559-9269 1-516-512-3133

 Email: info@creative-biomart.com  Fax: 1-631-938-8127

 45-1 Ramsey Road, Shirley, NY 11967, USA



SDS-PAGE



Tel: 1-631-559-9269 1-516-512-3133

Email: info@creative-biomart.com Fax: 1-631-938-8127

45-1 Ramsey Road, Shirley, NY 11967, USA