

Recombinant Human CXCL6 protein, GST-tagged

Cat. No. CXCL6-6532H Lot. No. (See product label)

SPECIFICATION

Product Overview	Recombinant Human CXCL6 protein(38-72 aa), fused with N-terminal GST tag, was expressed in E. coli.
Species	Human
Source	E. coli
ProteinLength	38-72 aa
Form	The purified protein was lyophilized from sterile phosphate-buffered saline (PBS: 58 mM Na ₂ HPO ₄ , 17 mM NaH ₂ PO ₄ , 68 mM NaCl, pH 8.0). Prior to lyophilization, 5% (w/v) trehalose and 5% (w/v) mannitol were incorporated as cryoprotective excipients. The protein was eluted with a buffer containing 100 mM reduced glutathione (GSH).
AASequence	GPVSAVLTELRTCLRVTLRVNPKTIGKLQVFPAG
Purity	90%, by SDS-PAGE.
Storage	Store at 2-8°C for 1-2 weeks. Aliquot and store at -20°C to -80°C for up to 3 months, reconstitution with sterile water and addition of an equal volume of glycerol. Avoid repeat freeze-thaw cycles.
Reconstitution	It is recommended that sterile water be added to the vial to prepare a stock solution of 0.25 ug/ul. Centrifuge the vial at 4°C before opening to recover the entire contents.

 Tel: 1-631-559-9269 1-516-512-3133

 Email: info@creative-biomart.com  Fax: 1-631-938-8127

 45-1 Ramsey Road, Shirley, NY 11967, USA

GENE INFORMATION

Gene Name CXCL6 chemokine (C-X-C motif) ligand 6 (granulocyte chemotactic protein 2) [Homo sapiens]

Official Symbol CXCL6

Synonyms CXCL6; chemokine (C-X-C motif) ligand 6 (granulocyte chemotactic protein 2); SCYB6, small inducible cytokine subfamily B (Cys X Cys), member 6 (granulocyte chemotactic protein 2); C-X-C motif chemokine 6; CKA 3; GCP 2; chemokine alpha 3; small-inducible cytokine B6; granulocyte chemotactic protein 2; Small inducible cytokine subfamily B (Cys-X-Cys), member b; small inducible cytokine subfamily B (Cys-X-Cys), member 6 (granulocyte chemotactic protein 2); GCP2; CKA-3; GCP-2; SCYB6;

mRNA Refseq NM_002993

Protein Refseq NP_002984

MIM 138965

UniProt ID P80162

Gene ID 6372

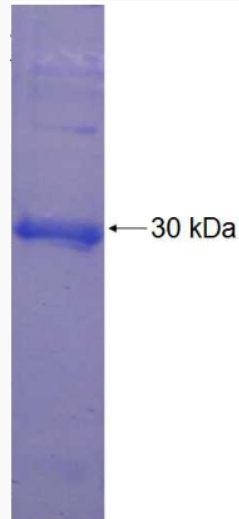
 Tel: 1-631-559-9269 1-516-512-3133

 Email: info@creative-biomart.com  Fax: 1-631-938-8127

 45-1 Ramsey Road, Shirley, NY 11967, USA



SDS-PAGE



Tel: 1-631-559-9269 1-516-512-3133

Email: info@creative-biomart.com Fax: 1-631-938-8127

45-1 Ramsey Road, Shirley, NY 11967, USA