

Recombinant Human CXCL8 Protein

Cat. No. CXCL8-001H Lot. No. (See product label)

SPECIFICATION

Product Overview	Recombinant Human CXCL8 Protein (23-99 aa.) without tag (6xHis tag removed) was expressed in E. coli.
Species	Human
Source	E.coli
ProteinLength	23-99
Molecular Mass	8.9 kDa
Purity	>95% confirmed by 12% SDS-PAGE stained with Coomassie Blue (CB).
Applications	ELISA, Western Blot, Antibody Production, Protein array
Quality Control Test	12% SDS-PAGE stained with Coomassie Blue (CB) and peptide fingerprinting by MALDI-TOF mass spectrometry.
Storage	Room temperature.
Expiry	All components are stable for 1 year of receipt, if stored properly.
Storage Buffer	Lyophilized from a solution containing TrisHCl 50mM pH 8.0 + 0.5mM EDTA + 1mM DTT.

 Tel: 1-631-559-9269 1-516-512-3133

 Email: info@creative-biomart.com  Fax: 1-631-938-8127

 45-1 Ramsey Road, Shirley, NY 11967, USA

Shipping Lyophilized at Ambient temperature

GENE INFORMATION

Gene Name CXCL8 C-X-C motif chemokine ligand 8 [Homo sapiens (human)]

Official Symbol CXCL8

Synonyms

CXCL8; C-X-C motif chemokine ligand 8; IL8; NAF; GCP1; LECT; LUCT; NAP1; GCP-1; LYNAP; MDNCF; MONAP; NAP-1; SCYB8; interleukin-8; T-cell chemotactic factor; alveolar macrophage chemotactic factor I; beta endothelial cell-derived neutrophil activating peptide; beta-thromboglobulin-like protein; chemokine (C-X-C motif) ligand 8; emoctakin; granulocyte chemotactic protein 1; interleukin 8; lung giant cell carcinoma-derived chemotactic protein; lymphocyte derived neutrophil activating peptide; monocyte-derived neutrophil chemotactic factor; monocyte-derived neutrophil-activating peptide; neutrophil-activating peptide 1; small inducible cytokine subfamily B, member 8; tumor necrosis factor-induced gene 1

Gene ID 3576

mRNA Refseq NM_000584

Protein Refseq NP_000575

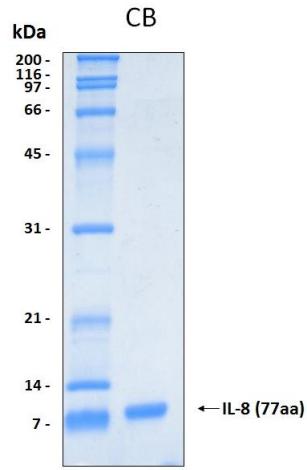
MIM 146930

UniProt ID P10145

 Tel: 1-631-559-9269 1-516-512-3133

 Email: info@creative-biomart.com  Fax: 1-631-938-8127

 45-1 Ramsey Road, Shirley, NY 11967, USA



Tel: 1-631-559-9269 1-516-512-3133

Email: info@creative-biomart.com Fax: 1-631-938-8127

45-1 Ramsey Road, Shirley, NY 11967, USA