

## Recombinant Human CXCL8 Protein, His-tagged

Cat. No. CXCL8-002H Lot. No. (See product label)

### SPECIFICATION

**Product Overview** Recombinant Human CXCL8 Protein (23-99 aa.) with 6xHis tag was expressed in E. coli.

**Species** Human

**Source** E.coli

**ProteinLength** 23-99

#### Description

The protein encoded by this gene is a member of the CXC chemokine family and is a major mediator of the inflammatory response. The encoded protein is commonly referred to as interleukin-8 (IL-8). IL-8 is secreted by mononuclear macrophages, neutrophils, eosinophils, T lymphocytes, epithelial cells, and fibroblasts. It functions as a chemotactic factor by guiding the neutrophils to the site of infection. Bacterial and viral products rapidly induce IL-8 expression. IL-8 also participates with other cytokines in the proinflammatory signaling cascade and plays a role in systemic inflammatory response syndrome (SIRS). This gene is believed to play a role in the pathogenesis of the lower respiratory tract infection bronchiolitis, a common respiratory tract disease caused by the respiratory syncytial virus (RSV). The overproduction of this proinflammatory protein is thought to cause the lung inflammation associated with cystic fibrosis. This proinflammatory protein is also suspected of playing a role in coronary artery disease and endothelial dysfunction. This protein is also secreted by tumor cells and promotes tumor migration, invasion, angiogenesis and metastasis. This chemokine is also a potent angiogenic factor. The

 Tel: 1-631-559-9269 1-516-512-3133

 Email: [info@creative-biomart.com](mailto:info@creative-biomart.com)  Fax: 1-631-938-8127

 45-1 Ramsey Road, Shirley, NY 11967, USA

binding of IL-8 to one of its receptors (IL-8RB/CXCR2) increases the permeability of blood vessels and increasing levels of IL-8 are positively correlated with increased severity of multiple disease outcomes (eg, sepsis). This gene and other members of the CXC chemokine gene family form a gene cluster in a region of chromosome 4q.

<b>Molecular Mass</b>	11.1 kDa
<b>Purity</b>	>95% confirmed by 12% SDS-PAGE stained with Coomassie Blue (CB).
<b>Applications</b>	ELISA, Western Blot, Antibody Production, Protein array
<b>Quality Control Test</b>	12% SDS-PAGE stained with Coomassie Blue (CB) and peptide fingerprinting by MALDI-TOF mass spectrometry.
<b>Storage</b>	Store working aliquots at 4 centigrade for up to one week. For extended storage, conserve at -80 centigrade.
<b>Expiry</b>	12 months from the date of purchase, if it is properly stored.
<b>Storage Buffer</b>	Lyophilized from a solution containing phosphate buffered saline (PBS), pH 7.4. No preservatives added.
<b>Shipping</b>	Dry Ice

## GENE INFORMATION

<b>Gene Name</b>	CXCL8 C-X-C motif chemokine ligand 8 [ Homo sapiens (human) ]
<b>Official Symbol</b>	CXCL8
<b>Synonyms</b>	CXCL8; C-X-C motif chemokine ligand 8; IL8; NAF; GCP1; LECT; LUCT; NAP1;

 Tel: 1-631-559-9269 1-516-512-3133

 Email: [info@creative-biomart.com](mailto:info@creative-biomart.com)  Fax: 1-631-938-8127

 45-1 Ramsey Road, Shirley, NY 11967, USA

GCP-1; LYNAP; MDNCF; MONAP; NAP-1; SCYB8; interleukin-8; T-cell chemotactic factor; alveolar macrophage chemotactic factor I; beta endothelial cell-derived neutrophil activating peptide; beta-thromboglobulin-like protein; chemokine (C-X-C motif) ligand 8; emoctakin; granulocyte chemotactic protein 1; interleukin 8; lung giant cell carcinoma-derived chemotactic protein; lymphocyte derived neutrophil activating peptide; monocyte-derived neutrophil chemotactic factor; monocyte-derived neutrophil-activating peptide; neutrophil-activating peptide 1; small inducible cytokine subfamily B, member 8; tumor necrosis factor-induced gene 1

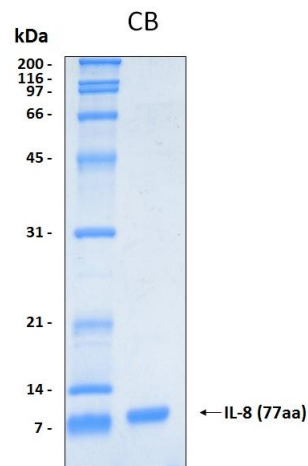
**Gene ID** 3576

**mRNA Refseq** NM\_000584

**Protein Refseq** NP\_000575

**MIM** 146930

**UniProt ID** P10145



 Tel: 1-631-559-9269 1-516-512-3133

 Email: [info@creative-biomart.com](mailto:info@creative-biomart.com)  Fax: 1-631-938-8127

 45-1 Ramsey Road, Shirley, NY 11967, USA