

Recombinant Canine CXCL8 Protein, His-tagged

Cat. No. CXCL8-03C **Lot. No.** (See product label)

SPECIFICATION

Product Overview	Recombinant canine IL-8/CXCL8 (28-101aa), fused to His-tag at C-terminus, was expressed in HEK293 cell and purified by using conventional chromatography techniques.
Species	Canine
Source	HEK293
ProteinLength	28-101 a.a.
Description	IL-8 is a chemotactic factor that attracts neutrophils, basophils, and T-cells, but not monocytes. It is also involved in neutrophil activation. It is released from several cell types in response to an inflammatory stimulus.
Form	Liquid
Molecular Mass	9.4 kDa (80aa)
AA Sequence	VSSELRCQCIKTHSTPFHPKYIKELRVIDSGPHCENSEIIVKLFNGNEVCLDPKEKWV QKVVQIFLKKAEKQDP
Endotoxin	< 1 EU/μg of protein (determined by LAL method)
Purity	> 90% by SDS-PAGE

 Tel: 1-631-559-9269 1-516-512-3133

 Email: info@creative-biomart.com  Fax: 1-631-938-8127

 45-1 Ramsey Road, Shirley, NY 11967, USA

Applications	SDS-PAGE
Storage	Can be stored at +2 to +8 centigrade for 1 week. For long term storage, aliquot and store at -20 to -80 centigrade. Avoid repeated freezing and thawing cycles.
Concentration	0.25 mg/mL (determined by BCA assay)
Storage Buffer	Phosphate-Buffered Saline (pH 7.4) containing 20% glycerol

GENE INFORMATION

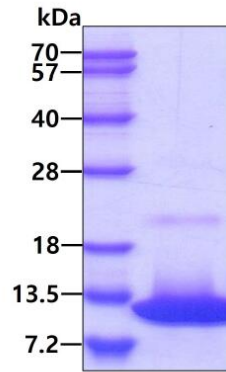
Gene Name	CXCL8 C-X-C motif chemokine ligand 8 [<i>Canis lupus familiaris</i> (dog)]
Official Symbol	CXCL8
Synonyms	CXCL8; C-X-C motif chemokine ligand 8; IL8; interleukin-8; C-X-C motif chemokine 8; IL-8; chemokine (C-X-C motif) ligand 8
Gene ID	403850
mRNA Refseq	NM_001003200
Protein Refseq	NP_001003200
UniProt ID	P41324

 Tel: 1-631-559-9269 1-516-512-3133

 Email: info@creative-biomart.com  Fax: 1-631-938-8127

 45-1 Ramsey Road, Shirley, NY 11967, USA

SDS-PAGE



3 μ g by SDS-PAGE under reducing condition and visualized by coomassie blue stain

 Tel: 1-631-559-9269 1-516-512-3133

 Email: info@creative-biomart.com  Fax: 1-631-938-8127

 45-1 Ramsey Road, Shirley, NY 11967, USA