

Recombinant Human CXCL8 Protein

Cat. No. CXCL8-084H Lot. No. (See product label)

SPECIFICATION

Product Overview	Recombinant Human CXCL8 Protein(Ala 23-Ser 99)(NP_000575.1) was expressed and purified in Human Cells.
Species	Human
Source	Human Cells
ProteinLength	23-99 aa
Form	Lyophilized from sterile 100mM NaCl, 50mM Tris, pH 7.5.
Molecular Mass	The recombinant mature human cytokine IL8 comprising the 1-77 amino acids predicts a molecular mass of 8 kDa, and migrates as an approximately 12 kDa protein in SDS-PAGE due to glycosylation.
Endotoxin	< 1.0 EU per µg of the protein as determined by the LAL method.
Purity	> 95 % as determined by SDS-PAGE
Storage	Store it under sterile conditions at -20°C to -80°C upon receiving. Recommend to aliquot the protein into smaller quantities for optimal storage. Avoid repeated freeze-thaw cycles.
Reconstitution	It is recommended that sterile water be added to the vial to prepare a stock solution of 0.2 ug/ul. Centrifuge the vial at 4°C before opening to recover the entire contents.

 Tel: 1-631-559-9269 1-516-512-3133

 Email: info@creative-biomart.com  Fax: 1-631-938-8127

 45-1 Ramsey Road, Shirley, NY 11967, USA

GENE INFORMATION

Gene Name CXCL8 C-X-C motif chemokine ligand 8 [Homo sapiens (human)]

Official Symbol CXCL8

Synonyms CXCL8; C-X-C motif chemokine ligand 8; IL8; NAF; GCP1; LECT; LUCT; NAP1; GCP-1; LYNAP; MDNCF; MONAP; NAP-1; SCYB8; interleukin-8; T-cell chemotactic factor; alveolar macrophage chemotactic factor I; beta endothelial cell-derived neutrophil activating peptide; beta-thromboglobulin-like protein; chemokine (C-X-C motif) ligand 8; emoctakin; granulocyte chemotactic protein 1; interleukin 8; lung giant cell carcinoma-derived chemotactic protein; lymphocyte derived neutrophil activating peptide; monocyte-derived neutrophil chemotactic factor; monocyte-derived neutrophil-activating peptide; neutrophil-activating peptide 1; small inducible cytokine subfamily B, member 8; tumor necrosis factor-induced gene 1

Gene ID 3576

mRNA Refseq NM_000584


Protein Refseq NP_000575

MIM 146930

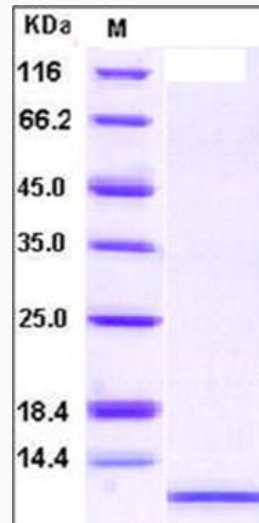
UniProt ID P10145

 Tel: 1-631-559-9269 1-516-512-3133

 Email: info@creative-biomart.com  Fax: 1-631-938-8127

 45-1 Ramsey Road, Shirley, NY 11967, USA

SDS-PAGE



 Tel: 1-631-559-9269 1-516-512-3133

 Email: info@creative-biomart.com  Fax: 1-631-938-8127

 45-1 Ramsey Road, Shirley, NY 11967, USA