

## Recombinant Human CXCL8 Protein (Ala23-Ser99), C-Fc tagged

Cat. No. CXCL8-3719H Lot. No. (See product label)

### SPECIFICATION

<b>Product Overview</b>	Recombinant human CXCL8 (Ala23-Ser99) fused with the C-terminal Fc tag was expressed in mammalian cells.
<b>Species</b>	Human
<b>Source</b>	Mammalian Cells
<b>ProteinLength</b>	Ala23-Ser99
<b>Form</b>	Lyophilized powder/frozen liquid
<b>Molecular Mass</b>	33.58 kDa
<b>Endotoxin</b>	< 1.0 EU/μg of the protein as determined by the LAL method.
<b>Purity</b>	>90% as determined by SDS-PAGE.
<b>Notes</b>	For research use only.
<b>Storage</b>	Use a manual defrost freezer and avoid repeated freeze thaw cycles. Store at 2 to 8 centigrade for one week. Store at -20 to -80 centigrade for twelve months from the date of receipt.
<b>Storage Buffer</b>	Supplied as solution form in PBS, pH 7.5 or lyophilized from PBS, pH 7.5.

 Tel: 1-631-559-9269 1-516-512-3133

 Email: [info@creative-biomart.com](mailto:info@creative-biomart.com)  Fax: 1-631-938-8127

 45-1 Ramsey Road, Shirley, NY 11967, USA

**Reconstitution** Reconstitute in sterile water for a stock solution.

**Shipping** They are shipped out with dry ice/blue ice unless customers require otherwise.

## GENE INFORMATION

**Gene Name** CXCL8 C-X-C motif chemokine ligand 8 [ Homo sapiens (human) ]

**Official Symbol** CXCL8

**Synonyms**

CXCL8; C-X-C motif chemokine ligand 8; IL8; NAF; GCP1; LECT; LUCT; NAP1; GCP-1; LYNAP; MDNCF; MONAP; NAP-1; SCYB8; interleukin-8; T-cell chemotactic factor; alveolar macrophage chemotactic factor I; beta endothelial cell-derived neutrophil activating peptide; beta-thromboglobulin-like protein; chemokine (C-X-C motif) ligand 8; emoctakin; granulocyte chemotactic protein 1; interleukin 8; lung giant cell carcinoma-derived chemotactic protein; lymphocyte derived neutrophil activating peptide; monocyte-derived neutrophil chemotactic factor; monocyte-derived neutrophil-activating peptide; neutrophil-activating peptide 1; small inducible cytokine subfamily B, member 8; tumor necrosis factor-induced gene 1

**Gene ID** 3576

**mRNA Refseq** NM\_000584

**Protein Refseq** NP\_000575

**MIM** 146930

**UniProt ID** P10145

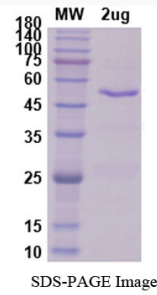
 Tel: 1-631-559-9269 1-516-512-3133

 Email: [info@creative-biomart.com](mailto:info@creative-biomart.com)  Fax: 1-631-938-8127

 45-1 Ramsey Road, Shirley, NY 11967, USA



SDS-PAGE



Tel: 1-631-559-9269 1-516-512-3133

Email: [info@creative-biomart.com](mailto:info@creative-biomart.com) Fax: 1-631-938-8127

45-1 Ramsey Road, Shirley, NY 11967, USA