

## Recombinant Active Human CXCL8 Protein, His-tagged(C-ter)

**Cat. No.** CXCL8-56H    **Lot. No.** (See product label)

### SPECIFICATION

<b>Product Overview</b>	Recombinant Active Human CXCL8 Protein with His tag (C-ter) was expressed in E. coli.
<b>Species</b>	Human
<b>Source</b>	E.coli
<b>Description</b>	The protein encoded by this gene is a member of the CXC chemokine family. This chemokine is one of the major mediators of the inflammatory response. This chemokine is secreted by several cell types. It functions as a chemoattractant, and is also a potent angiogenic factor. This gene is believed to play a role in the pathogenesis of bronchiolitis, a common respiratory tract disease caused by viral infection. This gene and other ten members of the CXC chemokine gene family form a chemokine gene cluster in a region mapped to chromosome 4q. [provided by RefSeq, Jul 2008]
<b>Form</b>	Powder
<b>Bio-activity</b>	Determined by its ability to chemoattract PBMC. The ED50 for this effect is <2 ng/mL.
<b>AA Sequence</b>	MSAKELRCQCIKTYSKPFHPKFIKELRVIESGPHCANTEIIVKLSGDGRELCLDPKENW VQRVVEKFLKRAENS
<b>Endotoxin</b>	Endotoxin level is less than 0.1 EU/μg of the protein, as determined by the LAL test.

 Tel: 1-631-559-9269    1-516-512-3133

 Email: [info@creative-biomart.com](mailto:info@creative-biomart.com)     Fax: 1-631-938-8127

 45-1 Ramsey Road, Shirley, NY 11967, USA

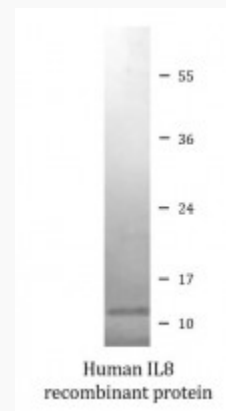


<b>Purity</b>	> 98% (by SDS-PAGE)
<b>Applications</b>	SDS-PAGE
<b>Notes</b>	For laboratory research only, not for drug, diagnostic or other use.
<b>Storage</b>	Lyophilized protein should be stored at -20°C. After reconstitution, aliquot and store at -20°C or -80°C for up to one month. Storage in frost free freezers is not recommended. Avoid repeated freeze/thaw cycles. Suggest spin the vial prior to opening.
<b>Storage Buffer</b>	PBS (pH 8.0)
<b>Reconstitution</b>	It is recommended to reconstitute the lyophilized protein in sterile water to a concentration not less than 100 µg/mL and incubate the stock solution for at least 20 min at room temperature to make sure the protein is dissolved completely.

## GENE INFORMATION

<b>Gene Name</b>	CXCL8 C-X-C motif chemokine ligand 8 [ Homo sapiens (human) ]
<b>Official Symbol</b>	CXCL8
<b>Synonyms</b>	CXCL8; C-X-C motif chemokine ligand 8; IL8; NAF; GCP1; LECT; LUCT; NAP1; GCP-1; LYNAP; MDNCF; MONAP; NAP-1; SCYB8; interleukin-8; T-cell chemotactic factor; alveolar macrophage chemotactic factor I; beta endothelial cell-derived neutrophil activating peptide; beta-thromboglobulin-like protein; chemokine (C-X-C motif) ligand 8; emoctakin; granulocyte chemotactic protein 1; interleukin 8; lung giant cell carcinoma-derived chemotactic protein; lymphocyte derived neutrophil activating peptide; monocyte-derived neutrophil chemotactic factor; monocyte-derived neutrophil-activating peptide; neutrophil-activating peptide 1; small inducible cytokine

subfamily B, member 8; tumor necrosis factor-induced gene 1

**Gene ID** 3576**mRNA Refseq** NM\_000584**Protein Refseq** NP\_000575**MIM** 146930**UniProt ID** P10145**SDS-PAGE** Tel: 1-631-559-9269 1-516-512-3133 Email: [info@creative-biomart.com](mailto:info@creative-biomart.com)  Fax: 1-631-938-8127 45-1 Ramsey Road, Shirley, NY 11967, USA