

## Recombinant Human CXCL8 Protein, Fc-tagged

Cat. No. CXCL8-693H Lot. No. (See product label)

### SPECIFICATION

<b>Product Overview</b>	Recombinant Human CXCL8 Protein(NP_000575.1) (Ala 23-Ser 99) was expressed in Human Cells, fused with the Fc region of human IgG1 at the N-terminus.
<b>Species</b>	Human
<b>Source</b>	Human Cells
<b>ProteinLength</b>	23-99 aa
<b>Form</b>	Lyophilized from sterile 100mM Glycine, 10mM NaCl, 50mM Tris, pH 7.5.
<b>Molecular Mass</b>	The recombinant human Fc/IL8 (aa 1-77)chimera is a disulfide-linked homodimeric protein and the IL8 gene encodes the 1-77 amino acids. The reduced monomer consists of 314 amino acids and has a predicted molecular mass of 35.6 kDa. In SDS-PAGE under reducing conditions, the apparent molecular mass of rh Fc/IL8 (aa 1-77) monomer is approximately 40 kDa due to glycosylation.
<b>Endotoxin</b>	< 1.0 EU per µg of the protein as determined by the LAL method.
<b>Purity</b>	> 95 % as determined by SDS-PAGE
<b>Storage</b>	Store it under sterile conditions at -20°C to -80°C upon receiving. Recommend to aliquot the protein into smaller quantities for optimal storage. Avoid repeated freeze-thaw cycles.

 Tel: 1-631-559-9269 1-516-512-3133

 Email: [info@creative-biomart.com](mailto:info@creative-biomart.com)  Fax: 1-631-938-8127

 45-1 Ramsey Road, Shirley, NY 11967, USA

**Reconstitution** It is recommended that sterile water be added to the vial to prepare a stock solution of 0.2 ug/ul. Centrifuge the vial at 4°C before opening to recover the entire contents.

## GENE INFORMATION

**Gene Name** CXCL8 C-X-C motif chemokine ligand 8 [ Homo sapiens (human) ]

**Official Symbol** CXCL8

**Synonyms**

CXCL8; C-X-C motif chemokine ligand 8; IL8; NAF; GCP1; LECT; LUCT; NAP1; GCP-1; LY NAP; MDNCF; MONAP; NAP-1; SCYB8; interleukin-8; T-cell chemotactic factor; alveolar macrophage chemotactic factor I; beta endothelial cell-derived neutrophil activating peptide; beta-thromboglobulin-like protein; chemokine (C-X-C motif) ligand 8; emoctakin; granulocyte chemotactic protein 1; interleukin 8; lung giant cell carcinoma-derived chemotactic protein; lymphocyte derived neutrophil activating peptide; monocyte-derived neutrophil chemotactic factor; monocyte-derived neutrophil-activating peptide; neutrophil-activating peptide 1; small inducible cytokine subfamily B, member 8; tumor necrosis factor-induced gene 1

**Gene ID** 3576

**mRNA Refseq** NM\_000584

**Protein Refseq** NP\_000575

**MIM** 146930

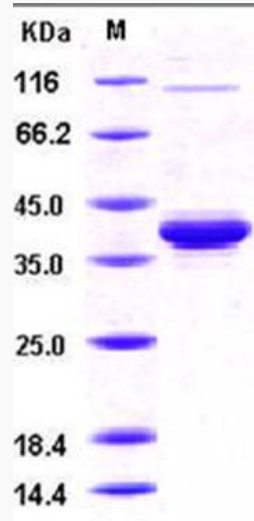
**UniProt ID** P10145

 Tel: 1-631-559-9269 1-516-512-3133

 Email: [info@creative-biomart.com](mailto:info@creative-biomart.com)  Fax: 1-631-938-8127

 45-1 Ramsey Road, Shirley, NY 11967, USA

**SDS-PAGE**



 Tel: 1-631-559-9269 1-516-512-3133

 Email: [info@creative-biomart.com](mailto:info@creative-biomart.com)  Fax: 1-631-938-8127

 45-1 Ramsey Road, Shirley, NY 11967, USA