

Recombinant Human CXCR1 Protein, GST-tagged

Cat. No. CXCR1-2177H Lot. No. (See product label)

SPECIFICATION

Product Overview Human CXCR1 full-length ORF (AAH28221.1, 1 a.a. - 350 a.a.) recombinant protein with GST-tag at N-terminal.

Species Human

Source Wheat Germ

Description The protein encoded by this gene is a member of the G-protein-coupled receptor family. This protein is a receptor for interleukin 8 (IL8). It binds to IL8 with high affinity, and transduces the signal through a G-protein activated second messenger system. Knockout studies in mice suggested that this protein inhibits embryonic oligodendrocyte precursor migration in developing spinal cord. This gene, IL8RB, a gene encoding another high affinity IL8 receptor, as well as IL8RBP, a pseudogene of IL8RB, form a gene cluster in a region mapped to chromosome 2q33-q36. [provided by RefSeq, Jul 2008]

Molecular Mass 64.24 kDa

AA Sequence MSNITDPQMWDFDDLNFTGMPPADEDYSPCRLETETLNKYVVIAYALVFLLSLLGNS
LVMLVILYSRVGRSVTDVYLLNLALADLLFALTLPIWAASKVNGWIFGTFLCKVVSLLK
EVNFYSGILLACISVDRYLAIVHATRTLQKRHLVKFVCLGCWGLSMNLSLPFFLFR
QAYHPNNSPVCYEVLGNDTAKWRMVLRLPHTFGFIVPLFVMLFCYGFLLRTLKFA
HMGQKHRAMRVIFAVVLIFLLCWLPYNLVLADTLMRTQVIQESCERRNNIGRALDAT
EILGFLHSCLNPIIYAFIQNFRHGFLLKILAMHGLVSKEFLARHCVTSYSSSVNVSSN

 Tel: 1-631-559-9269 1-516-512-3133

 Email: info@creative-biomart.com  Fax: 1-631-938-8127

 45-1 Ramsey Road, Shirley, NY 11967, USA

	L
Applications	Enzyme-linked Immunoabsorbent Assay Western Blot (Recombinant protein) Antibody Production Protein Array
Notes	Best use within three months from the date of receipt of this protein.
Storage	Store at -80 centigrade. Aliquot to avoid repeated freezing and thawing.
Storage Buffer	50 mM Tris-HCl, 10 mM reduced Glutathione, pH=8.0 in the elution buffer.
GENE INFORMATION	
Gene Name	CXCR1 chemokine (C-X-C motif) receptor 1 [Homo sapiens]
Official Symbol	CXCR1
Synonyms	CXCR1; chemokine (C-X-C motif) receptor 1; CMKAR1, IL8RA, interleukin 8 receptor, alpha; C-X-C chemokine receptor type 1; CD181; CDw128a; CKR 1; CXC-R1; CXCR-1; IL-8R A; IL-8 receptor type 1; interleukin 8 receptor, alpha; interleukin-8 receptor type 1; interleukin-8 receptor type A; high affinity interleukin-8 receptor A; C-C; CD128; CKR-1; IL8R1; IL8RA; CMKAR1; IL8RBA; C-C-CKR-1;
Gene ID	3577
mRNA Refseq	NM_000634
Protein Refseq	NP_000625

 Tel: 1-631-559-9269 1-516-512-3133

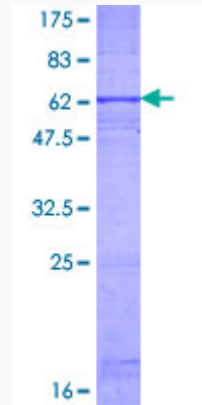
 Email: info@creative-biomart.com  Fax: 1-631-938-8127

 45-1 Ramsey Road, Shirley, NY 11967, USA

MIM 146929

UniProt ID P25024

**Quality Control
Testing:**



12.5% SDS-PAGE Stained with Coomassie Blue.

 Tel: 1-631-559-9269 1-516-512-3133

 Email: info@creative-biomart.com  Fax: 1-631-938-8127

 45-1 Ramsey Road, Shirley, NY 11967, USA