

Recombinant Human CXCR2 Protein, GST-tagged

Cat. No. CXCR2-2179H Lot. No. (See product label)

SPECIFICATION

Product Overview	Human CXCR2 full-length ORF (NP_001548.1, 1 a.a. - 360 a.a.) recombinant protein with GST-tag at N-terminal.
Species	Human
Source	Wheat Germ
Description	<p>The protein encoded by this gene is a member of the G-protein-coupled receptor family. This protein is a receptor for interleukin 8 (IL8). It binds to IL8 with high affinity, and transduces the signal through a G-protein activated second messenger system. This receptor also binds to chemokine (C-X-C motif) ligand 1 (CXCL1/MGSA), a protein with melanoma growth stimulating activity, and has been shown to be a major component required for serum-dependent melanoma cell growth. This receptor mediates neutrophil migration to sites of inflammation. The angiogenic effects of IL8 in intestinal microvascular endothelial cells are found to be mediated by this receptor. Knockout studies in mice suggested that this receptor controls the positioning of oligodendrocyte precursors in developing spinal cord by arresting their migration. This gene, IL8RA, a gene encoding another high affinity IL8 receptor, as well as IL8RBP, a pseudogene of IL8RB, form a gene cluster in a region mapped to chromosome 2q33-q36. Alternatively spliced variants, encoding the same protein, have been identified. [provided by RefSeq, Nov 2009]</p>
Molecular Mass	67.2 kDa

 Tel: 1-631-559-9269 1-516-512-3133

 Email: info@creative-biomart.com  Fax: 1-631-938-8127

 45-1 Ramsey Road, Shirley, NY 11967, USA

AA Sequence

MEDFNMESDSFEDFWKGEDLSNYSYSSTLPPFLLDAAPCEPESLEINKYFVVIYALV
 FLLSLLGNLVMVLVILYSRVGRSVTDVYLLNLALADLLFALTLPIWAASKVNGWIFGTF
 LCKVVSLLEKVNIFYSGILLACISVDRYLAIVHATRRTLQKRYLVKFICLSIWGLSLLLAL
 PVLLFRRTVYSSNVSPACYEDMGNNTANWRMLLRILPQSFGFVPLLIMLFCYGFTLR
 TLFKAHMGQKHRAMRVIFAVVLIFLLCWLPLYNLVLLADTLMRTQVIQETCERRNHIDR
 ALDATEILGILHSCLNPLIYAFIQKFRHGLLKILAIHGLISKDSLPLKDSRPSFVGSSSGH
 TSTTL

Applications

Enzyme-linked Immunoabsorbent Assay
 Western Blot (Recombinant protein)
 Antibody Production
 Protein Array

Notes

Best use within three months from the date of receipt of this protein.

Storage

Store at -80 centigrade. Aliquot to avoid repeated freezing and thawing.

Storage Buffer

50 mM Tris-HCl, 10 mM reduced Glutathione, pH=8.0 in the elution buffer.

GENE INFORMATION

Gene Name CXCR2 chemokine (C-X-C motif) receptor 2 [Homo sapiens]

Official Symbol CXCR2

Synonyms

CXCR2; chemokine (C-X-C motif) receptor 2; IL8RB, interleukin 8 receptor, beta; C-X-C chemokine receptor type 2; CD182; CMKAR2; CXC-R2; CXCR-2; IL-8R B; GRO/MGSA receptor; IL-8 receptor type 2; interleukin 8 receptor B; chemokine (CXC) receptor 2; interleukin 8 receptor, beta; interleukin 8 receptor type 2; interleukin-8 receptor type B; CXCR2 gene for IL8 receptor type B; high affinity interleukin-8 receptor B; IL8R2; IL8RA; IL8RB; CDw128b;

 Tel: 1-631-559-9269 1-516-512-3133

 Email: info@creative-biomart.com  Fax: 1-631-938-8127

 45-1 Ramsey Road, Shirley, NY 11967, USA

Gene ID 3579

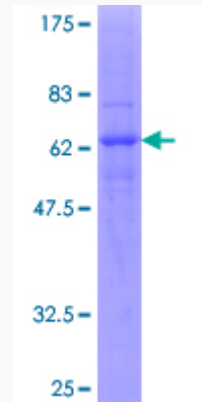
mRNA Refseq NM_001168298

Protein Refseq NP_001161770

MIM 146928

UniProt ID P25025

**Quality Control
Testing:**



12.5% SDS-PAGE Stained with Coomassie Blue.

 Tel: 1-631-559-9269 1-516-512-3133

 Email: info@creative-biomart.com  Fax: 1-631-938-8127

 45-1 Ramsey Road, Shirley, NY 11967, USA