

## Recombinant Human CXCR2 Protein, Myc/DDK-tagged, C13 and N15-labeled

Cat. No. CXCR2-5491H Lot. No. (See product label)

### SPECIFICATION

#### Product Overview

CXCR2 MS Standard C13 and N15-labeled recombinant protein (NP\_001548) with a C-terminal MYC/DDK tag, was expressed in HEK293 cells.

#### Species

Human

#### Source

HEK293

#### Description

The protein encoded by this gene is a member of the G-protein-coupled receptor family. This protein is a receptor for interleukin 8 (IL8). It binds to IL8 with high affinity, and transduces the signal through a G-protein activated second messenger system. This receptor also binds to chemokine (C-X-C motif) ligand 1 (CXCL1/MGSA), a protein with melanoma growth stimulating activity, and has been shown to be a major component required for serum-dependent melanoma cell growth. This receptor mediates neutrophil migration to sites of inflammation. The angiogenic effects of IL8 in intestinal microvascular endothelial cells are found to be mediated by this receptor. Knockout studies in mice suggested that this receptor controls the positioning of oligodendrocyte precursors in developing spinal cord by arresting their migration. This gene, IL8RA, a gene encoding another high affinity IL8 receptor, as well as IL8RBP, a pseudogene of IL8RB, form a gene cluster in a region mapped to chromosome 2q33-q36. Alternatively spliced variants, encoding the same protein, have been identified.

#### Molecular Mass

40.8 kDa

 Tel: 1-631-559-9269 1-516-512-3133

 Email: [info@creative-biomart.com](mailto:info@creative-biomart.com)  Fax: 1-631-938-8127

 45-1 Ramsey Road, Shirley, NY 11967, USA

**AA Sequence**

MEDFNMESDSFEDFWKGEDLSNYSYSSTLPPFLLDAAPEPESLEINKYFVVIYALV  
 FLLSLLGNLVMVLVILYSRVGRSVTDVYLLNLALADLLFALTLPIWAASKVNGWIFGTF  
 LCKVVSLLEKVNIFYSGILLACISVDRYLAIVHATRRTLQKRYLVKFICLSIWGLSLLLAL  
 PVLLFRRTVYSSNVSPACYEDMGNNTANWRMLLRILPQSFGFIVPLLIMLFCYGFTLR  
 TLFKAHMGQKHRAMRVIFAVVLIFLLCWLPLYNLVLLADTLMRTQVIQETCERRNHIDR  
 ALDATEILGILHSCLNPLIYAFIQKFRHGLLKILAIHGLISKDSLPSKDSRPSFVGSSSGH  
 TSTTLTRTRPLEQKLISEEDLAANDILDYKDDDDKV

**Purity** > 80% as determined by SDS-PAGE and Coomassie blue staining

**Stability** Stable for 3 months from receipt of products under proper storage and handling conditions.

**Storage** Store at -80 centigrade. Avoid repeated freeze-thaw cycles.

**Concentration** 50 µg/mL as determined by BCA

**Storage Buffer** 100 mM glycine, 25 mM Tris-HCl, pH 7.3.

## GENE INFORMATION

**Gene Name** CXCR2 C-X-C motif chemokine receptor 2 [ Homo sapiens (human) ]

**Official Symbol** CXCR2

**Synonyms** CXCR2; chemokine (C-X-C motif) receptor 2; IL8RB, interleukin 8 receptor, beta; C-X-C chemokine receptor type 2; CD182; CMKAR2; CXC-R2; CXCR-2; IL-8R B; GRO/MGSA receptor; IL-8 receptor type 2; interleukin 8 receptor B; chemokine (CXC) receptor 2; interleukin 8 receptor, beta; interleukin 8 receptor type 2; interleukin-8 receptor type B; CXCR2 gene for IL8 receptor type B; high affinity interleukin-8 receptor B; IL8R2; IL8RA; IL8RB; CDw128b;

 Tel: 1-631-559-9269 1-516-512-3133

 Email: [info@creative-biomart.com](mailto:info@creative-biomart.com)  Fax: 1-631-938-8127

 45-1 Ramsey Road, Shirley, NY 11967, USA

**Gene ID** 3579

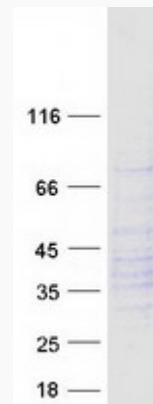
**mRNA Refseq** NM\_001557

**Protein Refseq** NP\_001548

**MIM** 146928

**UniProt ID** P25025

**SDS-PAGE**



 Tel: 1-631-559-9269 1-516-512-3133

 Email: [info@creative-biomart.com](mailto:info@creative-biomart.com)  Fax: 1-631-938-8127

 45-1 Ramsey Road, Shirley, NY 11967, USA