

Recombinant Human CXCR4 protein, His-tagged

Cat. No. CXCR4-510H Lot. No. (See product label)

SPECIFICATION

Product Overview	Recombinant Human CXCR4 protein (Asp262-Ser352) was fused to His-tag at N-terminus and expressed in E.coli.
Species	Human
Source	E.coli
ProteinLength	91
Description	This gene encodes a CXC chemokine receptor specific for stromal cell-derived factor-1. The protein has 7 transmembrane regions and is located on the cell surface. It acts with the CD4 protein to support HIV entry into cells and is also highly expressed in breast cancer cells. Mutations in this gene have been associated with WHIM (warts, hypogammaglobulinemia, infections, and myelokathexis) syndrome. Alternate transcriptional splice variants, encoding different isoforms, have been characterized.
Form	20mM Tris, 150mM NaCl, pH8.0, containing 1mM EDTA, 1mM DTT, 0.01% SKL, 5% Trehalose and Proclin300.
Molecular Mass	16 kDa as determined by SDS-PAGE reducing conditions.
AA Sequence	DSFILLEIHKQGCEFENTVHKWISITEALAFFHCCLNPILYAFLGAKFKTSAQHALTSVS RGSSLKILSKGKRGGHSSVSTESSESSFHSS
Endotoxin	<1.0 EU per 1g (determined by the LAL method).

 Tel: 1-631-559-9269 1-516-512-3133

 Email: info@creative-biomart.com  Fax: 1-631-938-8127

 45-1 Ramsey Road, Shirley, NY 11967, USA

Purity	>90%
Applications	Positive Control; Immunogen; SDS-PAGE; WB.
Storage	Avoid repeated freeze/thaw cycles. Store at 2-8 centigrade for one month. Aliquot and store at -80 centigrade for 12 months.
Reconstitution	Reconstitute in 20mM Tris, 150mM NaCl (pH8.0) to a concentration of 0.1-1.0 mg/mL. Do not vortex.

GENE INFORMATION

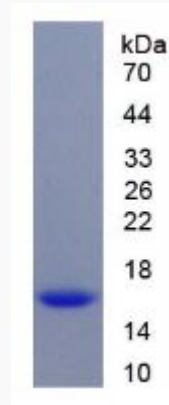
Gene Name	CXCR4
Official Symbol	CXCR4
Synonyms	FB22; HM89; LAP3; LCR1; NPYR; WHIM; CD184; LAP-3; LESTR; NPY3R; NPYRL; WHIMS; HSY3RR; NPYY3R; D2S201E; Fusin; Leukocyte-derived seven transmembrane domain receptor; Lipopolysaccharide-associated protein 3
Gene ID	7852
mRNA Refseq	NM_001008540.2
Protein Refseq	NP_001008540.1
MIM	162643
UniProt ID	P61073

 Tel: 1-631-559-9269 1-516-512-3133

 Email: info@creative-biomart.com  Fax: 1-631-938-8127

 45-1 Ramsey Road, Shirley, NY 11967, USA

**SDS-PAGE of
CXCR4-510H**



 Tel: 1-631-559-9269 1-516-512-3133

 Email: info@creative-biomart.com  Fax: 1-631-938-8127

 45-1 Ramsey Road, Shirley, NY 11967, USA