

## Recombinant Human CXCR6 Protein, GST-tagged

**Cat. No.** CXCR6-2184H    **Lot. No.** (See product label)

### SPECIFICATION

<b>Product Overview</b>	Human CXCR6 full-length ORF ( AAH33584.1, 1 a.a. - 342 a.a.) recombinant protein with GST-tag at N-terminal.
<b>Species</b>	Human
<b>Source</b>	Wheat Germ
<b>Description</b>	CXCR6 (C-X-C Motif Chemokine Receptor 6) is a Protein Coding gene. Diseases associated with CXCR6 include Xanthogranulomatous Cholecystitis. Among its related pathways are Peptide ligand-binding receptors and Chemokine Superfamily Pathway: Human/Mouse Ligand-Receptor Interactions. GO annotations related to this gene include G-protein coupled receptor activity and C-X-C chemokine receptor activity. An important paralog of this gene is CCR6.
<b>Molecular Mass</b>	63.36 kDa
<b>AA Sequence</b>	MAEHDYHEDYGFSSFNDSSQEEHQDFLQFSKVFLPCMYLVVFCGLVGNLVLVISI FYHKLQSLTDVFLVNLPPADLVFVCTLPFWAYAGIHEWVFGQVMCKSLLGIYTINFYT SMLILTCITVDRFIVVVKATKAYNQAKRMTWGKVTSLLIWVISLLVSLPQIIYGNVFNL DKLICGYHDEAISTVVLATQMTLGFLLPLLMIVCYSVIKTLPHAGGFQKHRSLKIIFLV MAVLLTQMPFNLMKFIRSTHWEYYAMTSFHYTIMVTEAIAYLRACLNPVLYAFVSLK FRKNFWKLVKDIGCLPYLGVSHQWKSSDNSKTFSSASHNVEATSMFQL
<b>Applications</b>	Enzyme-linked Immunoabsorbent Assay Western Blot (Recombinant protein)

 Tel: 1-631-559-9269    1-516-512-3133

 Email: [info@creative-biomart.com](mailto:info@creative-biomart.com)     Fax: 1-631-938-8127

 45-1 Ramsey Road, Shirley, NY 11967, USA

	Antibody Production Protein Array
<b>Notes</b>	Best use within three months from the date of receipt of this protein.
<b>Storage</b>	Store at -80 centigrade. Aliquot to avoid repeated freezing and thawing.
<b>Storage Buffer</b>	50 mM Tris-HCl, 10 mM reduced Glutathione, pH=8.0 in the elution buffer.
<b>GENE INFORMATION</b>	
<b>Gene Name</b>	CXCR6 chemokine (C-X-C motif) receptor 6 [ Homo sapiens ]
<b>Official Symbol</b>	CXCR6
<b>Synonyms</b>	CXCR6; chemokine (C-X-C motif) receptor 6; C-X-C chemokine receptor type 6; BONZO; CD186; STRL33; TYMSTR; CDw186; CXC-R6; CXCR-6; G protein-coupled receptor; G-protein coupled receptor bonzo; G-protein coupled receptor STRL33;
<b>Gene ID</b>	10663
<b>mRNA Refseq</b>	NM_006564
<b>Protein Refseq</b>	NP_006555
<b>MIM</b>	605163
<b>UniProt ID</b>	O00574

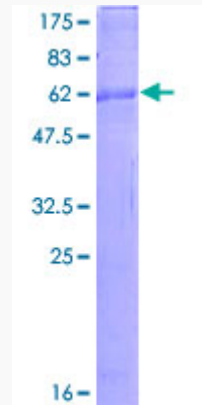
 Tel: 1-631-559-9269 1-516-512-3133

 Email: [info@creative-biomart.com](mailto:info@creative-biomart.com)  Fax: 1-631-938-8127

 45-1 Ramsey Road, Shirley, NY 11967, USA

**Quality Control**

**Testing:**



12.5% SDS-PAGE Stained with Coomassie Blue.

 Tel: 1-631-559-9269 1-516-512-3133

 Email: [info@creative-biomart.com](mailto:info@creative-biomart.com)  Fax: 1-631-938-8127

 45-1 Ramsey Road, Shirley, NY 11967, USA