

Recombinant Human CXXC1 protein, His-tagged

Cat. No. CXXC1-3305H **Lot. No.** (See product label)

SPECIFICATION

Product Overview	Recombinant Human CXXC1 protein(), fused with N-terminal His tag, was expressed in E.coli.
Species	Human
Source	E.coli
Form	The purified protein was Lyophilized from sterile PBS (58mM Na ₂ HPO ₄ , 17mM NaH ₂ PO ₄ , 68mM NaCl, pH7.4). 5 % trehalose and 5 % mannitol are added as protectant before lyophilization.
AASequence	MEGDGSDPEPPDAGEDSKSENGENAPIYCICRKP DINC FMIGCDNCNEWFHGDCIRI TEKMAKAIREWYCRECREKDPKLEIRYRHKKS RERDGNERSSEPRDEGGGRKRP VPD PDLQRRAGSGTG V GAMLARGSASPHKSSPQPLVATPSQHHQQQQQIKRSA RMCGECEACRRTEDCGHCDFCRDMKKFGGPNKIRQKCLRQCQLRARESY
Purity	85%, by SDS-PAGE with Coomassie Brilliant Blue staining.
Storage	Store at 2-8°C for 1-2 weeks. Aliquot and store at -20°C to -80°C for up to 3 months, reconstitution with sterile water and addition of an equal volume of glycerol. Avoid repeat freeze-thaw cycles.
Reconstitution	Dissolve the product in 200 µl sterile water to achieve a working concentration of 0.25 g/µl. If experimental compatibility allows, mix the aqueous solution with an equal volume of glycerol (1:1 ratio) after initial reconstitution.

 Tel: 1-631-559-9269 1-516-512-3133

 Email: info@creative-biomart.com  Fax: 1-631-938-8127

 45-1 Ramsey Road, Shirley, NY 11967, USA

GENE INFORMATION

Gene Name CXXC1 CXXC finger protein 1 [Homo sapiens]

Official Symbol CXXC1

Synonyms CXXC1; CXXC finger protein 1; CXXC finger 1 (PHD domain); cpG-binding protein; CFP1; CGBP; CpG binding protein; DNA binding protein with PHD finger and CXXC domain; hCGBP; HsT2645; PCCX1; PHF18; SPP1; ZCGPC1; zinc finger; CpG binding type containing 1; CXXC-type zinc finger protein 1; zinc finger, CpG binding-type containing 1; PHD finger and CXXC domain-containing protein 1; DNA-binding protein with PHD finger and CXXC domain; 2410002116Rik; 5830420C16Rik;

Gene ID 30827

mRNA Refseq NM_001101654

Protein Refseq NP_001095124

MIM 609150

UniProt ID Q9POU4

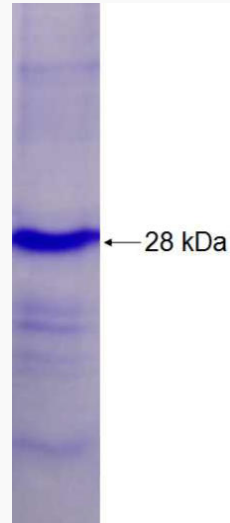
 Tel: 1-631-559-9269 1-516-512-3133

 Email: info@creative-biomart.com  Fax: 1-631-938-8127

 45-1 Ramsey Road, Shirley, NY 11967, USA



SDS-PAGE



Tel: 1-631-559-9269 1-516-512-3133

Email: info@creative-biomart.com Fax: 1-631-938-8127

45-1 Ramsey Road, Shirley, NY 11967, USA