

Recombinant Human CYB561 Protein, GST-tagged

Cat. No. CYB561-2209H **Lot. No.** (See product label)

SPECIFICATION

Product Overview	Human CYB561 full-length ORF (NP_001017916.1, 1 a.a. - 251 a.a.) recombinant protein with GST-tag at N-terminal.
Species	Human
Source	Wheat Germ
Description	CYB561 (Cytochrome B561) is a Protein Coding gene. GO annotations related to this gene include ferric-chelate reductase activity and transmembrane electron transfer carrier. An important paralog of this gene is CYB561A3.
Molecular Mass	54 kDa
AA Sequence	MEGGAAAATPTALPYYVAFSPLLGLTLVAMTGAWLGLYRGGIAWESDLQFNAHPLC MVIGLIFLQGNALLVYRVRNEAKRTTKVLHGLLHIFALVIALVGLVAVFDYHRKKGYA DLYSLHSWCGILVFVLYFVQWLVGFSFFLFPGASFSLRSRYRPQHIFFGATIFLLSVG TALLGLKEALLFNLGGKYSFAFEPEGVLANVLGLLLACFGGAVLYILTRADWKRPSQA EEQALSMDFKLTEGDSPGSQ
Applications	Enzyme-linked Immunoabsorbent Assay Western Blot (Recombinant protein) Antibody Production Protein Array
Notes	Best use within three months from the date of receipt of this protein.

 Tel: 1-631-559-9269 1-516-512-3133

 Email: info@creative-biomart.com  Fax: 1-631-938-8127

 45-1 Ramsey Road, Shirley, NY 11967, USA

Storage Store at -80 centigrade. Aliquot to avoid repeated freezing and thawing.

Storage Buffer 50 mM Tris-HCl, 10 mM reduced Glutathione, pH=8.0 in the elution buffer.

GENE INFORMATION

Gene Name CYB561 cytochrome b-561 [Homo sapiens]

Official Symbol CYB561

Synonyms FRRS2

Gene ID 1534

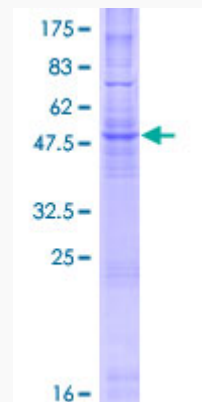
mRNA Refseq NM_001915.3

Protein Refseq NP_001906.3

MIM 600019

UniProt ID P49447

Quality Control Testing:



 Tel: 1-631-559-9269 1-516-512-3133

 Email: info@creative-biomart.com  Fax: 1-631-938-8127

 45-1 Ramsey Road, Shirley, NY 11967, USA



12.5% SDS-PAGE Stained with Coomassie Blue.

 Tel: 1-631-559-9269 1-516-512-3133

 Email: info@creative-biomart.com  Fax: 1-631-938-8127

 45-1 Ramsey Road, Shirley, NY 11967, USA