

Recombinant Full Length Human CYB5A Protein, C-Flag-tagged

Cat. No. CYB5A-1662HFL **Lot. No.** (See product label)

SPECIFICATION

Product Overview	Recombinant Full Length Human CYB5A Protein, fused to Flag-tag at C-terminus, was expressed in Mammalian cells.
Species	Human
Source	Mammalian Cells
Description	The protein encoded by this gene is a membrane-bound cytochrome that reduces ferric hemoglobin (methemoglobin) to ferrous hemoglobin, which is required for stearyl-CoA-desaturase activity. Defects in this gene are a cause of type IV hereditary methemoglobinemia. Three transcript variants encoding different isoforms have been found for this gene.
Form	25 mM Tris HCl, pH 7.3, 100 mM glycine, 10% glycerol.
Molecular Mass	15.1 kDa
AA Sequence	MAEQSDEAVKYYTLEEIQKHNSKSTWLILHHKVYDLTKFLEEHPGGEEVLREQAG GDATENFEDVGHSTDAREMSKTFIIGELHPDDRPKLNKPPETLITTIDSSSSWWTNW VIPAISAVAVALMYRLYMAED TRTRPLEQKLISEEDLAANDILDYKDDDDKV
Purity	> 80% as determined by SDS-PAGE and Coomassie blue staining.
Stability	Stable for 12 months from the date of receipt of the product under proper storage and

 Tel: 1-631-559-9269 1-516-512-3133

 Email: info@creative-biomart.com  Fax: 1-631-938-8127

 45-1 Ramsey Road, Shirley, NY 11967, USA



handling conditions. Avoid repeated freeze-thaw cycles.

Storage

Store at -80 centigrade.

Concentration

>50 ug/mL as determined by microplate BCA method.

Preparation

Recombinant protein was captured through anti-DDK affinity column followed by conventional chromatography steps.

Protein Families

Transmembrane

Full Length

Full L.

GENE INFORMATION

Gene Name

CYB5A cytochrome b5 type A [Homo sapiens (human)]

Official Symbol

CYB5A

Synonyms

CYB5; MCB5; METAG

Gene ID

1528

mRNA Refseq

NM_148923.4

Protein Refseq

NP_683725.1

MIM

613218

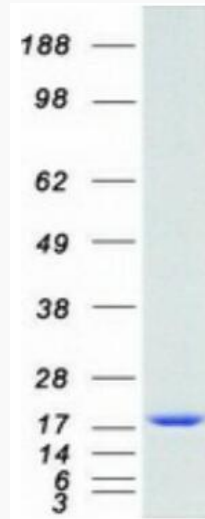
UniProt ID

P00167

Tel: 1-631-559-9269 1-516-512-3133

Email: info@creative-biomart.com Fax: 1-631-938-8127

45-1 Ramsey Road, Shirley, NY 11967, USA



Coomassie blue staining of purified CYB5A protein.

 Tel: 1-631-559-9269 1-516-512-3133

 Email: info@creative-biomart.com  Fax: 1-631-938-8127

 45-1 Ramsey Road, Shirley, NY 11967, USA