

Recombinant Human CYB5B Protein, GST-tagged

Cat. No. CYB5B-2214H Lot. No. (See product label)

SPECIFICATION

Product Overview	Human CYB5-M full-length ORF (AAH04373.1, 1 a.a. - 146 a.a.) recombinant protein with GST-tag at N-terminal.
Species	Human
Source	Wheat Germ
ProteinLength	1-146 a.a.
Description	CYB5B (Cytochrome B5 Type B) is a Protein Coding gene. Among its related pathways are Cytochrome P450 - arranged by substrate type and Metabolism. GO annotations related to this gene include heme binding and enzyme activator activity. An important paralog of this gene is CYB5A.
Molecular Mass	42.7 kDa
AA Sequence	MATAEASGSDGKGQEVETSVTYRLEEVAKRNSLKEWLVIHGRVYDVTRFLNEHP GGEEVLLEQAGVDASESFEDVGHSSDAREMLKQYYIGDIHPSDLKPESGSKDPSKN DTCKSCWAYWILPIIGAVLLGFLYRYTSESKSS
Applications	Enzyme-linked Immunoabsorbent Assay Western Blot (Recombinant protein) Antibody Production Protein Array

 Tel: 1-631-559-9269 1-516-512-3133

 Email: info@creative-biomart.com  Fax: 1-631-938-8127

 45-1 Ramsey Road, Shirley, NY 11967, USA

Notes	Best use within three months from the date of receipt of this protein.
Storage	Store at -80 centigrade. Aliquot to avoid repeated freezing and thawing.
Storage Buffer	50 mM Tris-HCl, 10 mM reduced Glutathione, pH=8.0 in the elution buffer.
GENE INFORMATION	
Gene Name	CYB5B cytochrome b5 type B (outer mitochondrial membrane) [Homo sapiens]
Official Symbol	CYB5B
Synonyms	CYB5B; cytochrome b5 type B (outer mitochondrial membrane); cytochrome b5 type B; CYB5 M; type 2 cyt-b5; outer mitochondrial membrane cytochrome b5; cytochrome b5 outer mitochondrial membrane isoform; OMB5; CYB5-M; CYPB5M; DKFZp686M0619;
Gene ID	80777
mRNA Refseq	NM_030579
Protein Refseq	NP_085056
MIM	611964
UniProt ID	O43169

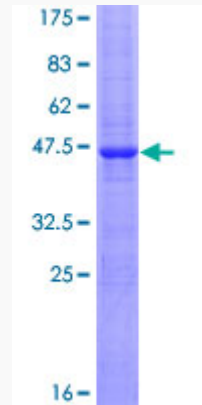
 Tel: 1-631-559-9269 1-516-512-3133

 Email: info@creative-biomart.com  Fax: 1-631-938-8127

 45-1 Ramsey Road, Shirley, NY 11967, USA

Quality Control

Testing:



12.5% SDS-PAGE Stained with Coomassie Blue.

 Tel: 1-631-559-9269 1-516-512-3133

 Email: info@creative-biomart.com  Fax: 1-631-938-8127

 45-1 Ramsey Road, Shirley, NY 11967, USA