

# Recombinant Human CYB5B Protein (Lys12-Cys118), C-His tagged

Cat. No. CYB5B-2228H Lot. No. (See product label)

## SPECIFICATION

<b>Product Overview</b>	Recombinant human CYB5B (Lys12-Cys118) fused with C-terminal His tag was expressed in Mammalian cells.
<b>Species</b>	Human
<b>Source</b>	Mammalian Cells
<b>ProteinLength</b>	Lys12-Cys118
<b>Form</b>	Lyophilized powder/frozen liquid
<b>Molecular Mass</b>	11.77 kDa
<b>Purity</b>	>90% as determined by SDS-PAGE
<b>Notes</b>	For research use only.
<b>Storage</b>	Use a manual defrost freezer and avoid repeated freeze thaw cycles. Store at 2 to 8 centigrade for one week. Store at -20 to -80 centigrade for twelve months from the date of receipt.
<b>Storage Buffer</b>	Supplied as solution form in PBS or lyophilized from PBS.
<b>Reconstitution</b>	Reconstitute in sterile water for a stock solution.

 Tel: 1-631-559-9269 1-516-512-3133

 Email: [info@creative-biomart.com](mailto:info@creative-biomart.com)  Fax: 1-631-938-8127

 45-1 Ramsey Road, Shirley, NY 11967, USA

**Shipping** They are shipped out with dry ice/blue ice unless customers require otherwise.

## GENE INFORMATION

**Gene Name** [CYB5B cytochrome b5 type B \(outer mitochondrial membrane\) \[ Homo sapiens \(human\) \]](#)

**Official Symbol** [CYB5B](#)

**Synonyms** [CYB5B](#); cytochrome b5 type B (outer mitochondrial membrane); cytochrome b5 type B; [CYB5 M](#); type 2 cyt-b5; outer mitochondrial membrane cytochrome b5; cytochrome b5 outer mitochondrial membrane isoform; [OMB5](#); [CYB5-M](#); [CYPB5M](#); [DKFZp686M0619](#);

**Gene ID** [80777](#)

**mRNA Refseq** [NM\\_030579](#)

**Protein Refseq** [NP\\_085056](#)

**MIM** [611964](#)

**UniProt ID** [O43169](#)

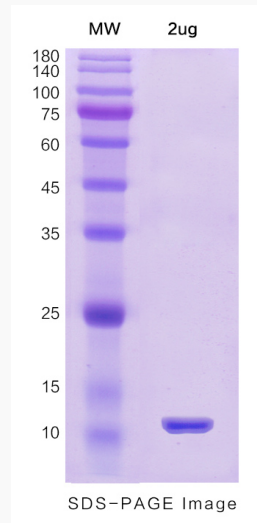
 Tel: 1-631-559-9269 1-516-512-3133

 Email: [info@creative-biomart.com](mailto:info@creative-biomart.com)  Fax: 1-631-938-8127

 45-1 Ramsey Road, Shirley, NY 11967, USA



SDS-PAGE



Tel: 1-631-559-9269 1-516-512-3133

Email: [info@creative-biomart.com](mailto:info@creative-biomart.com) Fax: 1-631-938-8127

45-1 Ramsey Road, Shirley, NY 11967, USA