

Recombinant Human CYB5B Protein, Myc/DDK-tagged, C13 and N15-labeled

Cat. No. CYB5B-4994H Lot. No. (See product label)

SPECIFICATION

Product Overview	CYB5B MS Standard C13 and N15-labeled recombinant protein (NP_085056) with a C-terminal MYC/DDK tag, was expressed in HEK293 cells.
Species	Human
Source	HEK293
Description	CYB5B (Cytochrome B5 Type B) is a Protein Coding gene. Diseases associated with CYB5B include North American Indian Childhood Cirrhosis and Optic Atrophy 8. Among its related pathways are Cytochrome P450 - arranged by substrate type and Metabolism. Gene Ontology (GO) annotations related to this gene include heme binding and enzyme activator activity. An important paralog of this gene is CYB5A.
Molecular Mass	16.3 kDa
AA Sequence	MATAEASGSDGKGQEVETSVTYRLEEVAKRNSLKEWLVIHGRVYDVTRFLNEHP GGEEVLLEQAGVDASESFEDVGHSSDAREMLKQYYIGDIHPSDLKPESGSKDPSKN DTCKSCWAYWILPIIGAVLLGFLYRYTSESKESTRTRPLEQKLISEEDLAANDILDYK DDDDKV
Purity	> 80% as determined by SDS-PAGE and Coomassie blue staining
Stability	Stable for 3 months from receipt of products under proper storage and handling conditions.

 Tel: 1-631-559-9269 1-516-512-3133

 Email: info@creative-biomart.com  Fax: 1-631-938-8127

 45-1 Ramsey Road, Shirley, NY 11967, USA

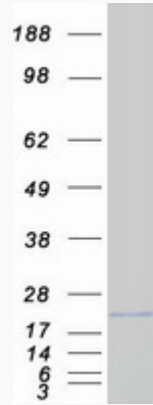
Storage	Store at -80 centigrade. Avoid repeated freeze-thaw cycles.
Concentration	50 µg/mL as determined by BCA
Storage Buffer	100 mM glycine, 25 mM Tris-HCl, pH 7.3.
GENE INFORMATION	
Gene Name	CYB5B cytochrome b5 type B [Homo sapiens (human)]
Official Symbol	CYB5B
Synonyms	CYB5B; cytochrome b5 type B (outer mitochondrial membrane); cytochrome b5 type B; CYB5 M; type 2 cyt-b5; outer mitochondrial membrane cytochrome b5; cytochrome b5 outer mitochondrial membrane isoform; OMB5; CYB5-M; CYPB5M; DKFZp686M0619;
Gene ID	80777
mRNA Refseq	NM_030579
Protein Refseq	NP_085056
MIM	611964
UniProt ID	O43169

 Tel: 1-631-559-9269 1-516-512-3133

 Email: info@creative-biomart.com  Fax: 1-631-938-8127

 45-1 Ramsey Road, Shirley, NY 11967, USA

SDS-PAGE



 Tel: 1-631-559-9269 1-516-512-3133

 Email: info@creative-biomart.com  Fax: 1-631-938-8127

 45-1 Ramsey Road, Shirley, NY 11967, USA