

## Recombinant Human CYBA Protein, GST-tagged

Cat. No. CYBA-2221H Lot. No. (See product label)

### SPECIFICATION

<b>Product Overview</b>	Human CYBA full-length ORF ( -, 1 a.a. - 254 a.a.) recombinant protein with GST-tag at N-terminal.
<b>Species</b>	Human
<b>Source</b>	Wheat Germ
<b>Description</b>	Cytochrome b is comprised of a light chain (alpha) and a heavy chain (beta). This gene encodes the light, alpha subunit which has been proposed as a primary component of the microbicidal oxidase system of phagocytes. Mutations in this gene are associated with autosomal recessive chronic granulomatous disease (CGD), that is characterized by the failure of activated phagocytes to generate superoxide, which is important for the microbicidal activity of these cells. [provided by RefSeq, Jul 2008]
<b>Molecular Mass</b>	53.68 kDa
<b>AA Sequence</b>	MGQIEWAMWANEQALASGLSECTSGTVEAAAWRGVPRPQPGPRATYRVGKWGA RRARPGRGQARRVRGTGAGPSGRGLEGGVLRPPVIPLQTLRSAAPLPHSLLSVPRL REGGSCSAGEEAVQPRWFPSPRSPRVGAPAWASGEAPLPLGSQALWRSLSLG LGWGMGSCPGAQPFSSGVCAGGGLRFHKAPKPPSDGPAQPSCTGTTTTGWDGTA PSHPPVHLLRGSSEGLHLEMDPLGTRARECLAQHG
<b>Applications</b>	Enzyme-linked Immunoabsorbent Assay Western Blot (Recombinant protein) Antibody Production

 Tel: 1-631-559-9269 1-516-512-3133

 Email: [info@creative-biomart.com](mailto:info@creative-biomart.com)  Fax: 1-631-938-8127

 45-1 Ramsey Road, Shirley, NY 11967, USA

	Protein Array
<b>Notes</b>	Best use within three months from the date of receipt of this protein.
<b>Storage</b>	Store at -80 centigrade. Aliquot to avoid repeated freezing and thawing.
<b>Storage Buffer</b>	50 mM Tris-HCl, 10 mM reduced Glutathione, pH=8.0 in the elution buffer.
<b>GENE INFORMATION</b>	
<b>Gene Name</b>	CYBA cytochrome b-245, alpha polypeptide [ Homo sapiens ]
<b>Official Symbol</b>	CYBA
<b>Synonyms</b>	CYBA; cytochrome b-245, alpha polypeptide; cytochrome b-245 light chain; flavocytochrome b 558 alpha polypeptide; p22 PHOX; p22phox; cytochrome b light chain; p22 phagocyte B-cytochrome; cytochrome b(558) alpha chain; cytochrome b558 subunit alpha; cytochrome b(558) alpha-subunit; cytochrome b, alpha polypeptide; flavocytochrome b-558 alpha polypeptide; neutrophil cytochrome b 22 kDa polypeptide; superoxide-generating NADPH oxidase light chain subunit; p22-PHOX; FLJ43590; FLJ99071;
<b>Gene ID</b>	1535
<b>mRNA Refseq</b>	NM_000101
<b>Protein Refseq</b>	NP_000092
<b>MIM</b>	608508
<b>UniProt ID</b>	P13498

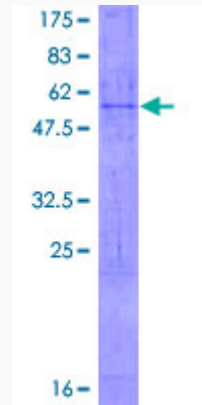
 Tel: 1-631-559-9269 1-516-512-3133

 Email: [info@creative-biomart.com](mailto:info@creative-biomart.com)  Fax: 1-631-938-8127

 45-1 Ramsey Road, Shirley, NY 11967, USA

**Quality Control**

**Testing:**



12.5% SDS-PAGE Stained with Coomassie Blue.

 Tel: 1-631-559-9269 1-516-512-3133

 Email: [info@creative-biomart.com](mailto:info@creative-biomart.com)  Fax: 1-631-938-8127

 45-1 Ramsey Road, Shirley, NY 11967, USA