

Recombinant Human CYBB Protein, GST-tagged

Cat. No. CYBB-2222H **Lot. No.** (See product label)

SPECIFICATION

Product Overview	Human CYBB partial ORF (AAH32720, 120 a.a. - 171 a.a.) recombinant protein with GST-tag at N-terminal.
Species	Human
Source	Wheat Germ
Description	Cytochrome b (-245) is composed of cytochrome b alpha (CYBA) and beta (CYBB) chain. It has been proposed as a primary component of the microbicidal oxidase system of phagocytes. CYBB deficiency is one of five described biochemical defects associated with chronic granulomatous disease (CGD). In this disorder, there is decreased activity of phagocyte NADPH oxidase; neutrophils are able to phagocytize bacteria but cannot kill them in the phagocytic vacuoles. The cause of the killing defect is an inability to increase the cell's respiration and consequent failure to deliver activated oxygen into the phagocytic vacuole. [provided by RefSeq, Jul 2008]
Molecular Mass	31.46 kDa
AA Sequence	LFNVEWCVNARVNNNDPYSVALSELGDRQNESYLNFKRIKNPEGGLYLAV
Applications	Enzyme-linked Immunoabsorbent Assay Western Blot (Recombinant protein) Antibody Production Protein Array

 Tel: 1-631-559-9269 1-516-512-3133

 Email: info@creative-biomart.com  Fax: 1-631-938-8127

 45-1 Ramsey Road, Shirley, NY 11967, USA

Notes	Best use within three months from the date of receipt of this protein.
Storage	Store at -80 centigrade. Aliquot to avoid repeated freezing and thawing.
Storage Buffer	50 mM Tris-HCl, 10 mM reduced Glutathione, pH=8.0 in the elution buffer.
GENE INFORMATION	
Gene Name	CYBB cytochrome b-245, beta polypeptide [Homo sapiens]
Official Symbol	CYBB
Synonyms	CYBB; cytochrome b-245, beta polypeptide; CGD, chronic granulomatous disease; cytochrome b-245 heavy chain; GP91 PHOX; NOX2; CGD91-phox; NADPH oxidase 2; p22 phagocyte B-cytochrome; cytochrome b558 subunit beta; cytochrome b(558) subunit beta; neutrophil cytochrome b 91 kDa polypeptide; heme-binding membrane glycoprotein gp91phox; superoxide-generating NADPH oxidase heavy chain subunit; CGD; AMCBX2; GP91-1; GP91PHOX; p91-PHOX; GP91-PHOX;
Gene ID	1536
mRNA Refseq	NM_000397
Protein Refseq	NP_000388
MIM	300481
UniProt ID	P04839

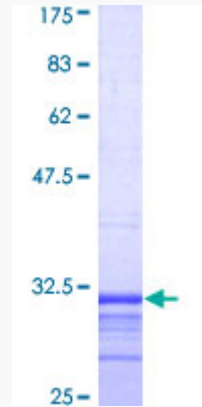
 Tel: 1-631-559-9269 1-516-512-3133

 Email: info@creative-biomart.com  Fax: 1-631-938-8127

 45-1 Ramsey Road, Shirley, NY 11967, USA

Quality Control

Testing:



12.5% SDS-PAGE Stained with Coomassie Blue.

 Tel: 1-631-559-9269 1-516-512-3133

 Email: info@creative-biomart.com  Fax: 1-631-938-8127

 45-1 Ramsey Road, Shirley, NY 11967, USA