

Recombinant Human CYCS Protein, Myc/DDK-tagged, C13 and N15-labeled

Cat. No. CYCS-3137H **Lot. No.** (See product label)

SPECIFICATION

Product Overview	CYCS MS Standard C13 and N15-labeled recombinant protein (NP_061820) with a C-terminal MYC/DDK tag, was expressed in HEK293 cells.
Species	Human
Source	HEK293
Description	This gene encodes a small heme protein that functions as a central component of the electron transport chain in mitochondria. The encoded protein associates with the inner membrane of the mitochondrion where it accepts electrons from cytochrome b and transfers them to the cytochrome oxidase complex. This protein is also involved in initiation of apoptosis. Mutations in this gene are associated with autosomal dominant nonsyndromic thrombocytopenia. Numerous processed pseudogenes of this gene are found throughout the human genome.
Molecular Mass	11.8 kDa
AA Sequence	MGDVEKGKKIFIMKCSQCHTVEKGGKHKTGPNLHGLFGRKIGQAPGYSYTAANKNK GIIWGEDTLMEYLENPKKYIPGTMIFVGIKKKEERADLIAYLKATNETRTRPLEQKLI SEEDLAANDILDYKDDDDKV
Purity	> 80% as determined by SDS-PAGE and Coomassie blue staining
Stability	Stable for 3 months from receipt of products under proper storage and handling

 Tel: 1-631-559-9269 1-516-512-3133

 Email: info@creative-biomart.com  Fax: 1-631-938-8127

 45-1 Ramsey Road, Shirley, NY 11967, USA

conditions.

Storage Store at -80 centigrade. Avoid repeated freeze-thaw cycles.

Concentration 50 µg/mL as determined by BCA

Storage Buffer 100 mM glycine, 25 mM Tris-HCl, pH 7.3.

GENE INFORMATION

Gene Name CYCS cytochrome c, somatic [Homo sapiens (human)]

Official Symbol CYCS

Synonyms CYCS; cytochrome c, somatic; cytochrome c; HCS; CYC; THC4;

Gene ID 54205

mRNA Refseq NM_018947

Protein Refseq NP_061820

MIM 123970

UniProt ID P99999

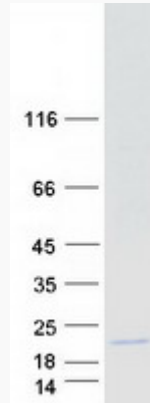
 Tel: 1-631-559-9269 1-516-512-3133

 Email: info@creative-biomart.com  Fax: 1-631-938-8127

 45-1 Ramsey Road, Shirley, NY 11967, USA



SDS-PAGE



Tel: 1-631-559-9269 1-516-512-3133

Email: info@creative-biomart.com Fax: 1-631-938-8127

45-1 Ramsey Road, Shirley, NY 11967, USA