

Recombinant Human CYLD lysine 63 deubiquitinase Protein, His tagged

Cat. No. CYLD-124H Lot. No. (See product label)

SPECIFICATION

Product Overview

Recombinant human CYLD protein (Q9NQC7) (Ile 125-Pro 304) with a His tag at the C-terminus was expressed in E. coli.

Species

Human

Source

E.coli

ProteinLength

125-304aa

Description

Deubiquitinase that specifically cleaves 'Lys-63'- and linear 'Met-1'-linked polyubiquitin chains and is involved in NF-kappa-B activation and TNF-alpha-induced necroptosis. Negatively regulates NF-kappa-B activation by deubiquitinating upstream signaling factors. Contributes to the regulation of cell survival, proliferation and differentiation via its effects on NF-kappa-B activation. Negative regulator of Wnt signaling. Inhibits HDAC6 and thereby promotes acetylation of alpha-tubulin and stabilization of microtubules. Plays a role in the regulation of microtubule dynamics, and thereby contributes to the regulation of cell proliferation, cell polarization, cell migration, and angiogenesis. Required for normal cell cycle progress and normal cytokinesis. Inhibits nuclear translocation of NF-kappa-B. Plays a role in the regulation of inflammation and the innate immune response, via its effects on NF-kappa-B activation. Dispensable for the maturation of intrathymic natural killer cells, but required for the continued survival of immature natural killer cells. Negatively regulates TNFRSF11A signaling and osteoclastogenesis. Involved in the regulation of ciliogenesis, allowing

 Tel: 1-631-559-9269 1-516-512-3133

 Email: info@creative-biomart.com  Fax: 1-631-938-8127

 45-1 Ramsey Road, Shirley, NY 11967, USA

| | |
|-----------------------|---|
| | ciliary basal bodies to migrate and dock to the plasma membrane; this process does not depend on NF-kappa-B activation. |
| Tag | C-His |
| Molecular Mass | 21.2 kDa |
| Endotoxin | Less than 1.0 EU/μg by the LAL method. |
| Purity | >95% as determined by SDS-PAGE. |
| Storage | Please avoid repeated freeze-thaw cycles. Samples are stable for up to twelve months from date of receipt at -20 to -80 centigrade. It is recommended that aliquot the reconstituted solution to minimize freeze-thaw cycles. |
| Storage Buffer | Lyophilized from a 0.2 μm filtered solution of PBS, pH7.4, 5% Trehalose, 5% mannitol. |
| Reconstitution | Reconstitute at 250 μg/mL in sterile water. |

GENE INFORMATION

| | |
|------------------------|--|
| Gene Name | CYLD CYLD lysine 63 deubiquitinase [Homo sapiens (human)] |
| Official Symbol | CYLD |
| Synonyms | CYLD; cylindromatosis (turban tumor syndrome); CYLD1; ubiquitin carboxyl-terminal hydrolase CYLD; KIAA0849; ubiquitin specific peptidase like 2; USPL2; ubiquitin thioesterase CYLD; deubiquitinating enzyme CYLD; ubiquitin thiolesterase CYLD; ubiquitin-specific-processing protease CYLD; probable ubiquitin carboxyl-terminal hydrolase CYLD; EAC; MFT; SBS; TEM; BRSS; CDMT; MFT1; CYLDI; HSPC057; |

 Tel: 1-631-559-9269 1-516-512-3133

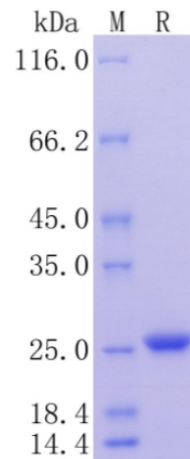
 Email: info@creative-biomart.com  Fax: 1-631-938-8127

 45-1 Ramsey Road, Shirley, NY 11967, USA

FLJ20180; FLJ31664; FLJ78684;

Gene ID 1540**mRNA Refseq** NM_001042355**Protein Refseq** NP_001035814**MIM** 605018**UniProt ID** Q9NQC7

**Protein on SDS-
PAGE under
reducing (R)
condition.**

 Tel: 1-631-559-9269 1-516-512-3133 Email: info@creative-biomart.com  Fax: 1-631-938-8127 45-1 Ramsey Road, Shirley, NY 11967, USA