

Active Recombinant Full Length Human CYLD Protein, GST tagged

Cat. No. CYLD-14H **Lot. No.** (See product label)

SPECIFICATION

Product Overview	Recombinant human CYLD (1-956) was expressed by baculovirus in Sf9 insect cells using an N-terminal GST tag.
Species	Human
Source	Insect Cells
ProteinLength	1-956 aa
Description	This gene encodes a cytoplasmic protein with three cytoskeletal-associated protein-glycine-conserved (CAP-GLY) domains that functions as a deubiquitinating enzyme. Mutations in this gene have been associated with cylindromatosis, multiple familial trichoepithelioma, and Brooke-Spiegler syndrome. Alternate transcriptional splice variants, encoding different isoforms, have been characterized.
Molecular Mass	135 kDa
Purity	> 80%
Stability	1 year at -70 centigrade from date of shipment.
Storage	Store product at -70 centigrade. For optimal storage, aliquot target into smaller quantities after centrifugation and store at recommended temperature. For most favorable performance, avoid repeated handling and multiple freeze/thaw cycles.

 Tel: 1-631-559-9269 1-516-512-3133

 Email: info@creative-biomart.com  Fax: 1-631-938-8127

 45-1 Ramsey Road, Shirley, NY 11967, USA

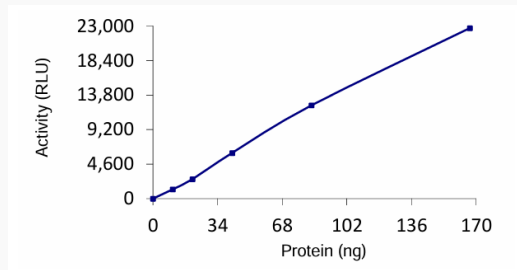
Storage Buffer	Recombinant protein stored in 50mM Tris-HCl, pH 7.5, 150mM NaCl, 10mM glutathione, 0.25mM DTT, 0.1mM EDTA, 0.1mM PMSF, 25% glycerol.
Concentration	0.10 µg/µL
Shipping	Dry ice
GENE INFORMATION	
Gene Name	CYLD CYLD lysine 63 deubiquitinase [Homo sapiens (human)]
Official Symbol	CYLD
Synonyms	CYLD; CYLD lysine 63 deubiquitinase; EAC; MFT; SBS; TEM; BRSS; CDMT; MFT1; CYLD1; CYLDI; USPL2; FTDALS8; ubiquitin carboxyl-terminal hydrolase CYLD; cylindromatosis (turban tumor syndrome); deubiquitinating enzyme CYLD; probable ubiquitin carboxyl-terminal hydrolase CYLD; ubiquitin specific peptidase like 2; ubiquitin thioesterase CYLD; ubiquitin thiolesterase CYLD; ubiquitin-specific-processing protease CYLD; EC 3.4.19.12
Gene ID	1540
mRNA Refseq	NM_015247
Protein Refseq	NP_056062
MIM	605018
UniProt ID	O94934

 Tel: 1-631-559-9269 1-516-512-3133

 Email: info@creative-biomart.com  Fax: 1-631-938-8127

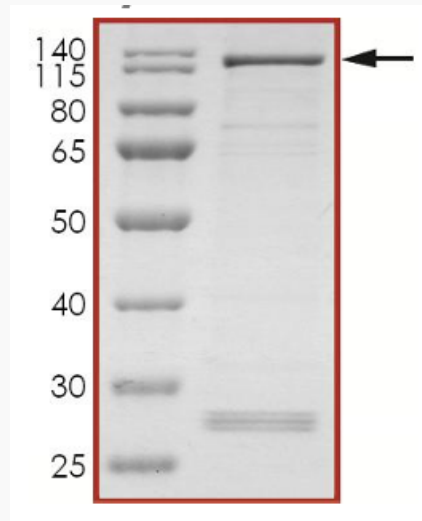
 45-1 Ramsey Road, Shirley, NY 11967, USA

Specific Activity



The specific activity of CYLD was determined to be 1 nmol/min/mg as per activity assay protocol.

Purity



The purity of CYLD was determined to be > 80% by densitometry, approx. MW 135 kDa.