

## Recombinant Human CYLD Protein, GST-tagged

Cat. No. CYLD-2238H Lot. No. (See product label)

### SPECIFICATION

<b>Product Overview</b>	Human CYLD partial ORF ( AAH12342, 854 a.a. - 953 a.a.) recombinant protein with GST-tag at N-terminal.
<b>Species</b>	Human
<b>Source</b>	Wheat Germ
<b>Description</b>	This gene is encodes a cytoplasmic protein with three cytoskeletal-associated protein-glycine-conserved (CAP-GLY) domains that functions as a deubiquitinating enzyme. Mutations in this gene have been associated with cylindromatosis, multiple familial trichoepithelioma, and Brooke-Spiegler syndrome. Alternate transcriptional splice variants, encoding different isoforms, have been characterized. [provided by RefSeq, Jul 2008]
<b>Molecular Mass</b>	36.63 kDa
<b>AA Sequence</b>	QNMELFAVLCIETSHYVAFVKY GKDDSAWLFFDSMADRGGQNGFNIPQVTPCPEV GEYLKMSLEDLHSLDSRRIQGCARRLLCDAYMCMYQSPTMSLYK
<b>Applications</b>	Enzyme-linked Immunoabsorbent Assay Western Blot (Recombinant protein) Antibody Production Protein Array
<b>Notes</b>	Best use within three months from the date of receipt of this protein.

 Tel: 1-631-559-9269 1-516-512-3133

 Email: [info@creative-biomart.com](mailto:info@creative-biomart.com)  Fax: 1-631-938-8127

 45-1 Ramsey Road, Shirley, NY 11967, USA

**Storage** Store at -80 centigrade. Aliquot to avoid repeated freezing and thawing.

**Storage Buffer** 50 mM Tris-HCl, 10 mM reduced Glutathione, pH=8.0 in the elution buffer.

## GENE INFORMATION

**Gene Name** [CYLD cylindromatosis \(turban tumor syndrome\) \[ Homo sapiens \]](#)

**Official Symbol** [CYLD](#)

**Synonyms**

CYLD; cylindromatosis (turban tumor syndrome); CYLD1; ubiquitin carboxyl-terminal hydrolase CYLD; KIAA0849; ubiquitin specific peptidase like 2; USPL2; ubiquitin thioesterase CYLD; deubiquitinating enzyme CYLD; ubiquitin thiolesterase CYLD; ubiquitin-specific-processing protease CYLD; probable ubiquitin carboxyl-terminal hydrolase CYLD; EAC; MFT; SBS; TEM; BRSS; CDMT; MFT1; CYLDI; HSPC057; FLJ20180; FLJ31664; FLJ78684;

**Gene ID** [1540](#)

**mRNA Refseq** [NM\\_001042355](#)

**Protein Refseq** [NP\\_001035814](#)

**MIM** [605018](#)

**UniProt ID** [Q9NQC7](#)

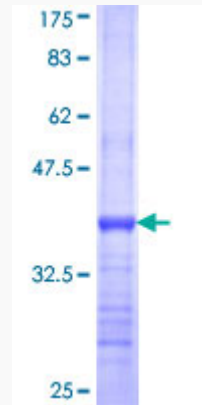
 Tel: 1-631-559-9269 1-516-512-3133

 Email: [info@creative-biomart.com](mailto:info@creative-biomart.com)  Fax: 1-631-938-8127

 45-1 Ramsey Road, Shirley, NY 11967, USA

**Quality Control**

**Testing:**



12.5% SDS-PAGE Stained with Coomassie Blue.

 Tel: 1-631-559-9269 1-516-512-3133

 Email: [info@creative-biomart.com](mailto:info@creative-biomart.com)  Fax: 1-631-938-8127

 45-1 Ramsey Road, Shirley, NY 11967, USA