

Active Recombinant Human CYLD Protein, His-tagged

Cat. No. CYLD-22H **Lot. No.** (See product label)

SPECIFICATION

Product Overview	Recombinant Human CYLD Protein with His tag was expressed in sf21 insect cell-baculovirus.
Species	Human
Source	Insect Cells
Description	This gene encodes a cytoplasmic protein with three cytoskeletal-associated protein-glycine-conserved (CAP-GLY) domains that functions as a deubiquitinating enzyme. Mutations in this gene have been associated with cylindromatosis, multiple familial trichoepithelioma, and Brooke-Spiegler syndrome. Alternate transcriptional splice variants, encoding different isoforms, have been characterized.
Bio-activity	Deubiquitylating Enzyme Assay: The activity of His-CYLD was validated by determining the increase in fluorescence measured as a result of the enzyme catalysed cleavage of the fluorogenic substrate Ubiquitin-Rhodamine110-Glycine generating Ubiquitin and Rhodamine110-Glycine. Incubation of the substrate in the presence or absence of His-CYLD was compared confirming the deubiquitylating activity of His-CYLD.
Molecular Mass	~110 kDa
AA Sequence	MSYYHHHHHDYDIPTTENLYFQGAMGSSSGLWSQEKVTSPLYWEERIFYLLLQECSTDKQTQKLLKVPKGSIGQYIQDRSVGHSRIPSAKGGKNQIGLKILEQPHAVLFDVDEKDVVEINEKFTELLAITNCEERFSLFKNRNRLSKGLQIDVGCVPVKVQLRSGEEKFPGV

 Tel: 1-631-559-9269 1-516-512-3133

 Email: info@creative-biomart.com  Fax: 1-631-938-8127

 45-1 Ramsey Road, Shirley, NY 11967, USA

VRFRGPLLAERTVSGIFFGVELLEEGRGQGFTDGVYQGKQLFQCDEDCGVFVALDK
 LELIEDDDTALESYAGPGDTMQVELPPLEINSRVSLKVGETIESGTVIFCDVLPGKE
 SLGYFVGVDMDNPIGNWDGRFDGVQLCSFACVESTILLHINDIIPALSESVTQERRPP
 KLAFMSRGGVGDGSSSHNKPKATGSTSDPGNRNRSELFYTLNGSSVDSQPQSKSK
 NTWYIDEVAEDPAKSLTEISTDFDRSSPPLQPPPVNSLTENRFHSLPFLTKMPNTN
 GSIGHSPLSLSAQSVMEELNTAPVQESPLAMPNGSHGLEVGSLAEVKENPPFYG
 VIRWIGQPPGLNEVLAGLELEDECAGCTDGTFRGTRYFTCALKKALFVKLKSCRPDS
 RFASLQPVSNQIERCNSLAFGGYLSEVVEENTPPKMEKEGLEIMIGKKKGIQGHYNS
 CYLDSTLFLCLFAFSSVLDTVLLRPKEKNDVEYYSETQELLRTEIVNPLRIYGYVCATKI
 MKLRKILEKVEAASGFTSEEKDPPEEFLNILFHILRVEPLLKIRSAGQKVQDCYFYQIF
 MEKNEKVGVPPTIQQLLEWSFINSNLKFAEAPSCLIQMFRFGKDFKLFKKIFPSLELNIT
 DLLEDTPRQCRICGGLAMYECRECYDDPDISAGKIKQFCKTCNTQVHLHPKRLNHKY
 NPVSLPKDLPDWDWRHGCIPCQNMELFAVLCIETSHYVAFVKYKDDSAWLFFDSM
 ADRDGGQNGFNIPQVTPCPEVGEYLKMSLEDLHSLDSRRIQGCARRLLCDAYMCM
 YQSPTMSLYK

Stability 12 months at -70 centigrade; aliquot as required

Storage At -70 centigrade

Concentration 0.5 mg/ml

Storage Buffer 50 mM HEPES pH 7.5, 150 mM sodium chloride, 2 mM dithiothreitol, 10% glycerol

GENE INFORMATION

Gene Name CYLD CYLD lysine 63 deubiquitinase [*Homo sapiens* (human)]

Official Symbol CYLD

Synonyms CYLD; CYLD lysine 63 deubiquitinase; EAC; MFT; SBS; TEM; BRSS; CDMT; MFT1;

 Tel: 1-631-559-9269 1-516-512-3133

 Email: info@creative-biomart.com  Fax: 1-631-938-8127

 45-1 Ramsey Road, Shirley, NY 11967, USA

CYLD1; CYLDI; USPL2; ubiquitin carboxyl-terminal hydrolase CYLD; cylindromatosis (turban tumor syndrome); deubiquitinating enzyme CYLD; probable ubiquitin carboxyl-terminal hydrolase CYLD; ubiquitin specific peptidase like 2; ubiquitin thioesterase CYLD; ubiquitin thiolesterase CYLD; ubiquitin-specific-processing protease CYLD; EC 3.4.19.12

Gene ID [1540](#)

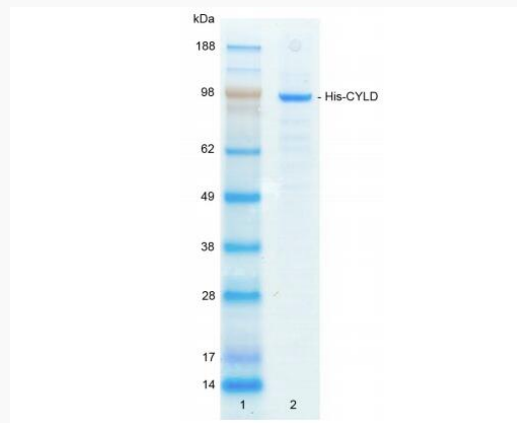
mRNA Refseq [NM_015247](#)

Protein Refseq [NP_056062](#)

MIM [605018](#)

UniProt ID [Q9NQC7](#)

Purity




4-12% gradient SDS-PAGE

InstantBlue™ staining

Lane 1: MW markers

Lane 2: 1 g His-CYLD

 Tel: 1-631-559-9269 1-516-512-3133

 Email: info@creative-biomart.com  Fax: 1-631-938-8127

 45-1 Ramsey Road, Shirley, NY 11967, USA