

Recombinant Human CYLD Protein, Myc/DDK-tagged, C13 and N15-labeled

Cat. No. CYLD-3581H **Lot. No.** (See product label)

SPECIFICATION

Product Overview	CYLD MS Standard C13 and N15-labeled recombinant protein (NP_056062) with a C-terminal MYC/DDK tag, was expressed in HEK293 cells.
Species	Human
Source	HEK293
Description	This gene encodes a cytoplasmic protein with three cytoskeletal-associated protein-glycine-conserved (CAP-GLY) domains that functions as a deubiquitinating enzyme. Mutations in this gene have been associated with cylindromatosis, multiple familial trichoepithelioma, and Brooke-Spiegler syndrome. Alternate transcriptional splice variants, encoding different isoforms, have been characterized.
Molecular Mass	107.1 kDa
AA Sequence	MSSGLWSQEKVTSPYWEERIFYLLLQECVTDKQTQKLLKVPKGSIGQYIQDRSVG HSRIPSAKGKKNQIGLKILEQPHAVLFVDEKDVVEINEKFTELLAITNCEERFSLFKN RNRLSKGLQIDVGCPVKVQLRSGEKFPVGRFRGPLLAERTVSGIFFGVELLEGR GGGFTDGVYQGKQLFQCDEDCGVFVALDKLELIEDDDTALESYAGPGDTMQVEL PPLEINSRVSLKVGETIESGTVIFCDVLPKESLGYFVGVDMNPIGNWDGRFDGVQ LCSEFACVESTILLHINDIIPALSESVTQERRPPKLAFM SRGVGDKGSSSHNPKATGS TSDPGNRNRSELFYTLNGSSVDSQPQSKSKNTWYIDEVAEDPAKSLTEISTDFDRSS PPLQPPPVNSLTENRFHSLPFSLT KMPNTNGSIGHSPLSLSAQSVMEELNTAPVQE

 Tel: 1-631-559-9269 1-516-512-3133

 Email: info@creative-biomart.com  Fax: 1-631-938-8127

 45-1 Ramsey Road, Shirley, NY 11967, USA

SPPLAMPPGNSHGLEVGS LAEVKENPPFYGVIRWIGQPPGLNEVLAGLELEDECAG
 CTDGTRGRTRYFTCALKKALFVKLKSCRPD SRFASLQPVS NQIERCNSLAFGGYLSE
 VVEENTPPKMEKEGLEIMIGKKKGIQGHYN SCYLDSTLFLCLFAFSSVLDTVLLRPKEK
 NDVEYYSETQELLRTEIVNPLRIYGYVCATKIMKLRKILEKVEAASGFTSEEKDP EEFLL
 NILFHHILRVEPLLKIRSAGQKVQDCYFYQIFMEKNEKVGVP TIQQLEWSFINSNLKF
 AEAPSLIIQM PRFGKDFKLFKKIFPSLELNITD LLEDTPRQCRICGGLAMYECRECYD
 DPDISAGKIKQFCKTCNTQVHLHPKRLNHKYNPVS LPKDLPDWDWRHGCIPCQNME
 LFAVLCIETSHYVAFVKY GKDDSAWLFFDSMADR DGGQNGFNIPQVTPCPEVGEYL
 KMSLEDLHSLDSRRIQGCARRLLCDAYMCMYQSPTMSLYKTRTRPLEQKLISEEDLA
 ANDILDYKDDDDKV

Purity > 80% as determined by SDS-PAGE and Coomassie blue staining

Stability Stable for 3 months from receipt of products under proper storage and handling conditions.

Storage Store at -80 centigrade. Avoid repeated freeze-thaw cycles.

Concentration 50 µg/mL as determined by BCA

Storage Buffer 100 mM glycine, 25 mM Tris-HCl, pH 7.3.

GENE INFORMATION

Gene Name CYLD CYLD lysine 63 deubiquitinase [Homo sapiens (human)]

Official Symbol CYLD

Synonyms CYLD; cylindromatosis (turban tumor syndrome); CYLD1; ubiquitin carboxyl-terminal hydrolase CYLD; KIAA0849; ubiquitin specific peptidase like 2; USPL2; ubiquitin thioesterase CYLD; deubiquitinating enzyme CYLD; ubiquitin thiolesterase CYLD;

 Tel: 1-631-559-9269 1-516-512-3133

 Email: info@creative-biomart.com  Fax: 1-631-938-8127

 45-1 Ramsey Road, Shirley, NY 11967, USA

ubiquitin-specific-processing protease CYLD; probable ubiquitin carboxyl-terminal hydrolase CYLD; EAC; MFT; SBS; TEM; BRSS; CDMT; MFT1; CYLDI; HSPC057; FLJ20180; FLJ31664; FLJ78684;

Gene ID [1540](#)

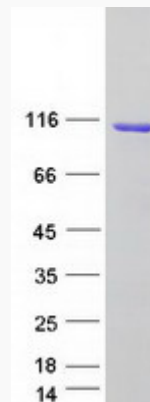
mRNA Refseq [NM_015247](#)

Protein Refseq [NP_056062](#)

MIM [605018](#)

UniProt ID [Q9NQC7](#)

SDS-PAGE



 Tel: 1-631-559-9269 1-516-512-3133

 Email: info@creative-biomart.com  Fax: 1-631-938-8127

 45-1 Ramsey Road, Shirley, NY 11967, USA