

# Recombinant Human CYLD Protein, Myc/DDK-tagged, C13 and N15-labeled

**Cat. No.** CYLD-6438H    **Lot. No.** (See product label)

## SPECIFICATION

<b>Product Overview</b>	CYLD MS Standard C13 and N15-labeled recombinant protein (NP_001035877) with a C-terminal MYC/DDK tag, was expressed in HEK293 cells.
<b>Species</b>	Human
<b>Source</b>	HEK293
<b>Description</b>	This gene encodes a cytoplasmic protein with three cytoskeletal-associated protein-glycine-conserved (CAP-GLY) domains that functions as a deubiquitinating enzyme. Mutations in this gene have been associated with cylindromatosis, multiple familial trichoepithelioma, and Brooke-Spiegler syndrome. Alternate transcriptional splice variants, encoding different isoforms, have been characterized.
<b>Molecular Mass</b>	107 kDa
<b>AA Sequence</b>	MSSGLWSQEKVTSPLYWEERIFYLLLQECVTDKQTQKLLKVPKGSIGQYIQDRSVG HSRIPSAKGKKNQIGLKILEQPHAVLFVDEKDVVEINEKFTELLAITNCEERFSLFKN RNRLSKGLQIDVGCPVKVQLRSGEEKFPGVVRFRGPLLAERTVSGIFFGVELLEGR GGGFTDGVYQGKQLFQCDEDCGVFVALDKLELIEDDDTALESYAGPGDTMQVEL PPLEINSRVSLKVGETIESGTVIFCDVLPKESLGYFVGVDMDNPIGNWDGRFDGVQ LCSFACVESTILLHINDIIPESVTQERRPPKLAFM SRGVGDKGSSSHNKPKATGSTSD PGNRNRSELFYTLNGSSVDSQPQSKSKNTWYIDEVAEDPAKSLTEISTDFDRSSPPL QPPPVNSLT TENRFHSLPFLTKMPNTNGSIGHSPLSLSAQSVMEELNTAPVQESPP

 Tel: 1-631-559-9269    1-516-512-3133

 Email: [info@creative-biomart.com](mailto:info@creative-biomart.com)     Fax: 1-631-938-8127

 45-1 Ramsey Road, Shirley, NY 11967, USA

LAMPPGNSHGLEVGS LAEVKENPPFYGVIRWIGQPPGLNEVLAGLELEDECAGCTD  
 GTFRGTRYFTCALKKALFVCLKSCRPD SRFASLQPVS NQIERCNSLAFGGYLSEVVE  
 ENTPPKMEKEGLEIMIGKKKGIQGHYN SCYLDSTLFC LFAFSSVLDTVLLRPKEKNDV  
 EYYSETQELLRTEIVNPLRIYGYVCATKIMKLRKILEKVEAASGFTSEEKDPEEFLNILF  
 HHILRVEPLLKIRSAGQKVQDCYFYQIFMEKNEKVGVP TIQQLLEWSFINSNLKFAEA  
 PSCLIIQM PRFGKDFKLFKKIFPSLELNITD LLEDTPRQCRICGGLAMYECRECYDDP  
 DISAGKIKQFCKTCNTQVHLHPKRLNHKYNPVS LPKDLPDWDWRHGCIPCQNMELF  
 AVLCIETSHYVAFVKY GKDDSAWLFFDSMADR DGGQNGFNIPQVTPCPEVGEYLKM  
 SLEDLHSLDSRRIQGCARRLLC DAYMCMYQSPTMSLYKTRTRPLEQKLISEEDLAAN  
 DILDYKDDDDKV

**Purity** > 80% as determined by SDS-PAGE and Coomassie blue staining

**Stability** Stable for 3 months from receipt of products under proper storage and handling conditions.

**Storage** Store at -80 centigrade. Avoid repeated freeze-thaw cycles.

**Concentration** 50 µg/mL as determined by BCA

**Storage Buffer** 100 mM glycine, 25 mM Tris-HCl, pH 7.3.

## GENE INFORMATION

**Gene Name** CYLD CYLD lysine 63 deubiquitinase [ Homo sapiens (human) ]

**Official Symbol** CYLD

**Synonyms** CYLD; cylindromatosis (turban tumor syndrome); CYLD1; ubiquitin carboxyl-terminal hydrolase CYLD; KIAA0849; ubiquitin specific peptidase like 2; USPL2; ubiquitin thioesterase CYLD; deubiquitinating enzyme CYLD; ubiquitin thiolesterase CYLD;

 Tel: 1-631-559-9269 1-516-512-3133

 Email: [info@creative-biomart.com](mailto:info@creative-biomart.com)  Fax: 1-631-938-8127

 45-1 Ramsey Road, Shirley, NY 11967, USA

ubiquitin-specific-processing protease CYLD; probable ubiquitin carboxyl-terminal hydrolase CYLD; EAC; MFT; SBS; TEM; BRSS; CDMT; MFT1; CYLDI; HSPC057; FLJ20180; FLJ31664; FLJ78684;

**Gene ID** 1540

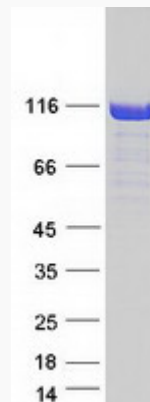
**mRNA Refseq** NM\_001042412

**Protein Refseq** NP\_001035877

**MIM** 605018

**UniProt ID** Q9NQC7

**SDS-PAGE**



 Tel: 1-631-559-9269 1-516-512-3133

 Email: [info@creative-biomart.com](mailto:info@creative-biomart.com)  Fax: 1-631-938-8127

 45-1 Ramsey Road, Shirley, NY 11967, USA