

# Recombinant Full Length Human CYLD Protein, C-Flag-tagged

Cat. No. CYLD-943HFL Lot. No. (See product label)

## SPECIFICATION

<b>Product Overview</b>	Recombinant Full Length Human CYLD Protein, fused to Flag-tag at C-terminus, was expressed in Mammalian cells.
<b>Species</b>	Human
<b>Source</b>	Mammalian Cells
<b>Description</b>	This gene encodes a cytoplasmic protein with three cytoskeletal-associated protein-glycine-conserved (CAP-GLY) domains that functions as a deubiquitinating enzyme. Mutations in this gene have been associated with cylindromatosis, multiple familial trichoepithelioma, and Brooke-Spiegler syndrome. Alternate transcriptional splice variants, encoding different isoforms, have been characterized.
<b>Form</b>	25 mM Tris HCl, pH 7.3, 100 mM glycine, 10% glycerol.
<b>Molecular Mass</b>	106.9 kDa
<b>AA Sequence</b>	MSSGLWSQEKVTSFYWEERIFYLLQECVTDKQTQKLLKVPKGSIGQYIQDRSVG HSRIPSAKGKKNQI GLKILEQPHAVLFVDEKDVVEINEKFTELLAITNCEERFSLFKN RNRLSKGLQIDVGCPVKVQLRSCEE KFPGVVFRFRGPLLAERTVSGIFFGVELLEEG RGQGFTDGVYQGGKQLFQCDEDCGVFVALDKLELIEDDDT ALESDYAGPGDTMQVE LPPLEINSRVSLKVGETIESGTVIFCDVLPGKESLGYFVGVDMDNPIGNWDGRF DGV QLCSFACVESTILLHINDIIPESVTQERRPPKLAFFMSRGGVGDGKSSSHNPKKATGSTS DPGNRNRSE LFYTLNGSSVDSQPQSKSKNTWYIDEVAEDPAKSLTEISTDFDRSSP PLQPPPVNSLTENRFHSLPFSL TKMPNTNGSIGHSPLSLSAQSVMEELNTAPVQE

 Tel: 1-631-559-9269 1-516-512-3133

 Email: [info@creative-biomart.com](mailto:info@creative-biomart.com)  Fax: 1-631-938-8127

 45-1 Ramsey Road, Shirley, NY 11967, USA

SPPLAMPPGNHGLEVGS LAEVKENPPFYGVIRWIGQ PPGLNEVLAGLELEDECAG  
 CTDGTRFRGTRYFTCALKKALFVKLKSCRPD SRFASLQPVSNQIERCNSLAF GGYLS  
 EVVEENTPPKMEKEGLEIMIGKKKGIQGHYNSCYLDSTLFC LFAFSSVLDTVLLRPKE  
 KNDVEYY SETQELLRTEIVNPLRIYGYVCATKIMKLRKILEKVEAASGFTSEEKDPEE  
 FLNILFHHILRVEPLLKIR SAGQKVQDCYFYQIFMEKNEKVG VPTIQQLLEWSFINSNL  
 KFAEAPSLIIQM PRFGKDFKLFKKIFPSL ELNITD LLEDTPRQCRICGGLAMYECRE  
 CYDDPDISAGKIKQFCKTCNTQVHLHPKRLNHKYNPVS LPKD LPDWDWRHGCIPC  
 QNMELFAVLCIETSHYVAFVKY GKDDSAWLF FDSMADR DGGQNGFNIPQVTPCPEV  
 G  
 EYLKMSLEDLHSLDSRRIQGCARRLLC DAYMCMYQSPTMSLYKTRTRPLEQKLISEE  
 DLAANDILDYKDDDDKV

**Purity** > 80% as determined by SDS-PAGE and Coomassie blue staining.

**Stability** Stable for 12 months from the date of receipt of the product under proper storage and handling conditions. Avoid repeated freeze-thaw cycles.

**Storage** Store at -80 centigrade.

**Concentration** >50 ug/mL as determined by microplate BCA method.

**Preparation** Recombinant protein was captured through anti-DDK affinity column followed by conventional chromatography steps.

**Protein Families** Druggable Genome

**Protein Pathways** RIG-I-like receptor signaling pathway

**Full Length** Full L.

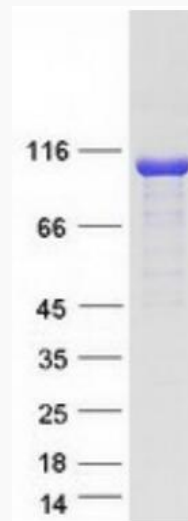
 Tel: 1-631-559-9269 1-516-512-3133

 Email: [info@creative-biomart.com](mailto:info@creative-biomart.com)  Fax: 1-631-938-8127

 45-1 Ramsey Road, Shirley, NY 11967, USA

## GENE INFORMATION

Gene Name	CYLD CYLD lysine 63 deubiquitinase [ Homo sapiens (human) ]
Official Symbol	CYLD
Synonyms	EAC; MFT; SBS; TEM; BRSS; CDMT; MFT1; CYLD1; CYLDI; USPL2; FTDALS8
Gene ID	1540
mRNA Refseq	NM_001042355.2
Protein Refseq	NP_001035814.1
MIM	605018
UniProt ID	Q9NQC7



Tel: 1-631-559-9269 1-516-512-3133

Email: [info@creative-biomart.com](mailto:info@creative-biomart.com) Fax: 1-631-938-8127

45-1 Ramsey Road, Shirley, NY 11967, USA



Coomassie blue staining of purified CYLD protein.

 Tel: 1-631-559-9269 1-516-512-3133

 Email: [info@creative-biomart.com](mailto:info@creative-biomart.com)  Fax: 1-631-938-8127

 45-1 Ramsey Road, Shirley, NY 11967, USA