

Recombinant Human CYP11A1 Protein (Met1-Gly300), N-His tagged

Cat. No. CYP11A1-1906H Lot. No. (See product label)

SPECIFICATION

Product Overview	Recombinant human CYP11A1 (Met1-Gly300) fused with N-His tag was expressed in E. coli.
Species	Human
Source	E.coli
ProteinLength	Met1-Gly300
Form	Lyophilized powder/frozen liquid
Molecular Mass	36.81 kDa
Purity	>90% as determined by SDS-PAGE
Notes	For research use only.
Storage	Use a manual defrost freezer and avoid repeated freeze thaw cycles. Store at 2 to 8 centigrade for one week. Store at -20 to -80 centigrade for twelve months from the date of receipt.
Storage Buffer	0.01M PBS, pH 7.4, 0.02% NLS
Reconstitution	Reconstitute in sterile water for a stock solution.

 Tel: 1-631-559-9269 1-516-512-3133

 Email: info@creative-biomart.com  Fax: 1-631-938-8127

 45-1 Ramsey Road, Shirley, NY 11967, USA

Shipping They are shipped out with dry ice/blue ice unless customers require otherwise.

GENE INFORMATION

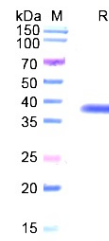
Gene Name	CYP11A1 cytochrome P450, family 11, subfamily A, polypeptide 1 [Homo sapiens (human)]
Official Symbol	CYP11A1
Synonyms	CYP11A1; cytochrome P450, family 11, subfamily A, polypeptide 1; CYP11A, cytochrome P450, subfamily XIA (cholesterol side chain cleavage); cholesterol side-chain cleavage enzyme, mitochondrial; cholesterol monooxygenase (side chain cleaving); P450SCC; steroid 20-22-lyase; cytochrome P450 11A1; cytochrome P450 (sc); cytochrome P450C11A1; cholesterol 20-22 desmolase; cholesterol monooxygenase (side-chain cleaving); cytochrome P450, subfamily XIA (cholesterol side chain cleavage); CYP11A; CYPXIA1;
Gene ID	1583
mRNA Refseq	NM_000781
Protein Refseq	NP_000772
MIM	118485
UniProt ID	P05108

 Tel: 1-631-559-9269 1-516-512-3133

 Email: info@creative-biomart.com  Fax: 1-631-938-8127

 45-1 Ramsey Road, Shirley, NY 11967, USA

SDS-PAGE



 Tel: 1-631-559-9269 1-516-512-3133

 Email: info@creative-biomart.com  Fax: 1-631-938-8127

 45-1 Ramsey Road, Shirley, NY 11967, USA