

Recombinant Human CYP11A1 Protein, Myc/DDK-tagged, C13 and N15-labeled

Cat. No. CYP11A1-4529H **Lot. No.** (See product label)

SPECIFICATION

Product Overview	CYP11A1 MS Standard C13 and N15-labeled recombinant protein (NP_001093243) with a C-terminal MYC/DDK tag, was expressed in HEK293 cells.
Species	Human
Source	HEK293
Description	<p>This gene encodes a member of the cytochrome P450 superfamily of enzymes. The cytochrome P450 proteins are monooxygenases which catalyze many reactions involved in drug metabolism and synthesis of cholesterol, steroids and other lipids.</p> <p>This protein localizes to the mitochondrial inner membrane and catalyzes the conversion of cholesterol to pregnenolone, the first and rate-limiting step in the synthesis of the steroid hormones. Two transcript variants encoding different isoforms have been found for this gene. The cellular location of the smaller isoform is unclear since it lacks the mitochondrial-targeting transit peptide.</p>
Molecular Mass	42.6 kDa
AA Sequence	<p>MAPEATKNFLPLLDVSRDFVSVLHRRIKKAGSGNYSGDISDDLFRFAFESITNVIFG ERQGMLEEVVNPEAQRFDIAIQMFHTSVPMLNLPPDLFRLFRRTKTWKDHVAAWDV IFSKADIYTQNFYWELRQKGSVHHDYRGILYRLLGDSKMSFEDIKANVTEMLAGGVD TTSMTLQWHLYEMARNLKVQDMLRAEVLAARHQAQGD MATMLQLVPLLKASIKETL RLHPISVTLQRYLVNDLVLRDYMIPAKTLVQVAIYALGREPTFFFDPENFDPTRWLSK</p>

 Tel: 1-631-559-9269 1-516-512-3133

 Email: info@creative-biomart.com  Fax: 1-631-938-8127

 45-1 Ramsey Road, Shirley, NY 11967, USA

DKNITYFRNLGFGWGVQRQCLGRRIAEELEMTIFLINMLENFRVEIQHLSDVGTTFNLILM
PEKPISFTFWPFNQEATQQTRTRPLEQKLISEEDLAANDILDYKDDDDKV

Purity > 80% as determined by SDS-PAGE and Coomassie blue staining

Stability Stable for 3 months from receipt of products under proper storage and handling conditions.

Storage Store at -80 centigrade. Avoid repeated freeze-thaw cycles.

Concentration 50 µg/mL as determined by BCA

Storage Buffer 100 mM glycine, 25 mM Tris-HCl, pH 7.3.

GENE INFORMATION

Gene Name CYP11A1 cytochrome P450 family 11 subfamily A member 1 [Homo sapiens (human)]

Official Symbol CYP11A1

Synonyms CYP11A1; cytochrome P450, family 11, subfamily A, polypeptide 1; CYP11A, cytochrome P450, subfamily XIA (cholesterol side chain cleavage); cholesterol side-chain cleavage enzyme, mitochondrial; cholesterol monooxygenase (side chain cleaving); P450SCC; steroid 20-22-lyase; cytochrome P450 11A1; cytochrome P450(scc); cytochrome P450C11A1; cholesterol 20-22 desmolase; cholesterol monooxygenase (side-chain cleaving); cytochrome P450, subfamily XIA (cholesterol side chain cleavage); CYP11A; CYPXIA1;

Gene ID 1583

 Tel: 1-631-559-9269 1-516-512-3133

 Email: info@creative-biomart.com  Fax: 1-631-938-8127

 45-1 Ramsey Road, Shirley, NY 11967, USA

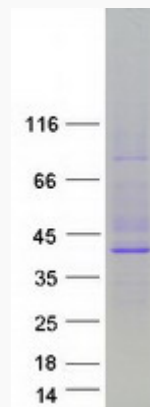
mRNA Refseq [NM_001099773](#)

Protein Refseq [NP_001093243](#)

MIM [118485](#)

UniProt ID [P05108](#)

SDS-PAGE



 Tel: 1-631-559-9269 1-516-512-3133

 Email: info@creative-biomart.com  Fax: 1-631-938-8127

 45-1 Ramsey Road, Shirley, NY 11967, USA