

Recombinant Human CYP11B1 Protein, GST-tagged

Cat. No. CYP11B1-2240H **Lot. No.** (See product label)

SPECIFICATION

Product Overview	Human CYP11B1 full-length ORF (AAH96285.1, 1 a.a. - 574 a.a.) recombinant protein with GST-tag at N-terminal.
Species	Human
Source	Wheat Germ
Description	<p>This gene encodes a member of the cytochrome P450 superfamily of enzymes. The cytochrome P450 proteins are monooxygenases which catalyze many reactions involved in drug metabolism and synthesis of cholesterol, steroids and other lipids. This protein localizes to the mitochondrial inner membrane and is involved in the conversion of progesterone to cortisol in the adrenal cortex. Mutations in this gene cause congenital adrenal hyperplasia due to 11-beta-hydroxylase deficiency. Transcript variants encoding different isoforms have been noted for this gene. [provided by RefSeq, Jul 2008]</p>
Molecular Mass	91.5 kDa
AA Sequence	<pre> MALRAKAEVCMAVPWLSLQRAQALGTRAARVPRTVLPFEAMP RRPGNRWLRLLQI WREQGYEDLHLEVHQTFQELGPIFRSRHSASFGRWGRSAARAGLWRCQGRGWC RANPSSLQRGQDSEALKYDLGGAGMVCVMLPEDVEKLQQVDSLHPHRMSLEPWV AYRQHRGHKCGVFLNVA DRGNSSPPFPGGI HGAPTHSGCRNGPEWRFNRLRLNP EVLSPNAVQRFLPMVDAVARDFSQALKKKVLQNARGSLTLDVQPSIFHYTIEASNLAL FGERLGLVGHSPSSASLNFLHALEVMFKSTVQLMFMPRSLSRWTSPKVWKEHFEA </pre>

 Tel: 1-631-559-9269 1-516-512-3133

 Email: info@creative-biomart.com  Fax: 1-631-938-8127

 45-1 Ramsey Road, Shirley, NY 11967, USA

WDCIFQYGDNCIQKIYQELAFSRPQQYTSIVAELLNAELSPDAIKANSMELTAGSVD
 TTVFPLLMTLFELARNPNVQQALRQESLAAAASISEHPQKATTELP LLRAALKETLRL
 YPVGLFLERVASSDLVLQNYHIPAGTLVRVFLYSLGRNPALFPRPERYNPQRWLDIR
 GSGRNFYHVFPFGFMRQCLGRRLAEAEMLLLLHHVLKHLQVETLTQEDIKMVYSFIL
 RPSMFPLLTFRAIN

Applications
 Enzyme-linked Immunoabsorbent Assay
 Western Blot (Recombinant protein)
 Antibody Production
 Protein Array

Notes
 Best use within three months from the date of receipt of this protein.

Storage
 Store at -80 centigrade. Aliquot to avoid repeated freezing and thawing.

Storage Buffer
 50 mM Tris-HCl, 10 mM reduced Glutathione, pH=8.0 in the elution buffer.

GENE INFORMATION

Gene Name
 CYP11B1 cytochrome P450, family 11, subfamily B, polypeptide 1 [Homo sapiens]

Official Symbol
 CYP11B1

Synonyms
 CYP11B1; cytochrome P450, family 11, subfamily B, polypeptide 1; CYP11B,
 cytochrome P450, subfamily XIB (steroid 11 beta hydroxylase), polypeptide 1;
 cytochrome P450 11B1, mitochondrial; CPN1; FHI; P450C11; CYPXIB1; cytochrome
 P450C11; cytochrome P-450c11; cytochrome p450 XIB1; steroid 11-beta-
 hydroxylase; steroid 11-beta-monooxygenase; cytochrome P450, subfamily XIB
 (steroid 11-beta-hydroxylase), polypeptide 1; CYP11B; FLJ36771;
 DKFZp686B05283;

 Tel: 1-631-559-9269 1-516-512-3133

 Email: info@creative-biomart.com  Fax: 1-631-938-8127

 45-1 Ramsey Road, Shirley, NY 11967, USA

Gene ID 1584

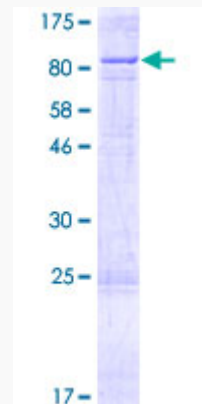
mRNA Refseq NM_000497

Protein Refseq NP_000488

MIM 610613

UniProt ID P15538

Quality Control
Testing:



12.5% SDS-PAGE Stained with Coomassie Blue.

Tel: 1-631-559-9269 1-516-512-3133

Email: info@creative-biomart.com Fax: 1-631-938-8127

45-1 Ramsey Road, Shirley, NY 11967, USA