

Recombinant Human CYP11B1 Protein (25-503 aa), His-SUMO-Myc-tagged

Cat. No. CYP11B1-2396H Lot. No. (See product label)

SPECIFICATION

Product Overview Recombinant Human CYP11B1 Protein (25-503 aa) is produced by E. coli expression system. This protein is fused with a 10xHis-SUMO tag at the N-terminal and a Myc tag at the C-terminal. Research Area: Cancer. Protein Description: Full Length of Mature Protein.

Species Human

Source E.coli

ProteinLength 25-503 aa

Form Tris-based buffer,50% glycerol

Molecular Mass 74.9 kDa

AA Sequence

```
GTRAARVPRTVLPFEAMPRRPGNRWLRLLQIWREQGYEDLHLEVHQTFQELGPIFR
YDLGGAGMVCVMLPEDVEKLQQVDSLPHRMSLEPWWAYRQHRGHKCGVFLNG
PEWRFNRLRLNPEVLSNAVQRFLPMVDAVARDFSQALKKKVLQNARGSLTLDVQP
SIFHYTIEASNLALFGERLGLVGHSPSSASLNFLHALEVMFKSTVQLMFMPRSLSRW
TSPKVWKEHFEAWDCIFQYGDNCIQKIYQELAFSRPQQYTSIVAELLNNAELSPDAIK
ANSMELTAGSVDTTVFPLLMTL FELARNPNVQQALRQESLAAAASISEHPQKATTEL
PLLRAALKETLRLYPVGLFLERVASSDLVLQNYHIPAGTLVRVFLYSLGRNPALFPRP
ERYNPQRWLDIRGSGRNFYHVPFGFGMRQCLGRRRLAEAEMLLLLHHVLKHLQVETL
TQEDIKMVYSFILRPSMFPLLTFRAIN
```

 Tel: 1-631-559-9269 1-516-512-3133

 Email: info@creative-biomart.com  Fax: 1-631-938-8127

 45-1 Ramsey Road, Shirley, NY 11967, USA



Purity	> 85% as determined by SDS-PAGE.
Notes	Repeated freezing and thawing is not recommended. Store working aliquots at 4 centigrade for up to one week.
Storage	The shelf life is related to many factors, storage state, buffer ingredients, storage temperature and the stability of the protein itself. Generally, the shelf life of liquid form is 6 months at -20 centigrade/-80 centigrade. The shelf life of lyophilized form is 12 months at -20 centigrade/-80 centigrade.
Concentration	A hardcopy of COA will be sent along with the products. Please refer to it for detailed information.

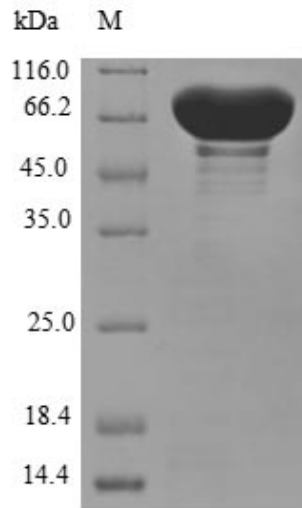
GENE INFORMATION

Gene Name	CYP11B1 cytochrome P450, family 11, subfamily B, polypeptide 1 [Homo sapiens]
Official Symbol	CYP11B1
Synonyms	CYP11B1; CPN1; FHI; P450C11; CYPXIB1; cytochrome P450C11; cytochrome P-450c11; CYP11B; FLJ36771; DKFZp686B05283;
Gene ID	1584
mRNA Refseq	NM_000497
Protein Refseq	NP_000488
MIM	610613
UniProt ID	P15538

Tel: 1-631-559-9269 1-516-512-3133

Email: info@creative-biomart.com Fax: 1-631-938-8127

45-1 Ramsey Road, Shirley, NY 11967, USA



(Tris-Glycine gel) Discontinuous SDS-PAGE (reduced) with 5% enrichment gel and 15% separation gel.

 Tel: 1-631-559-9269 1-516-512-3133

 Email: info@creative-biomart.com  Fax: 1-631-938-8127

 45-1 Ramsey Road, Shirley, NY 11967, USA